

Columbus Community Sports Park



RECREATION AND PARKS
DEPARTMENT

Columbus Community Sports Park

Overview — Purpose & Need

- Create park and recreation space around the Historic Crew Stadium and adjacent to the Ohio State Fairgrounds
- Benefit neighborhoods, the City and the region

Columbus Community Sports Park

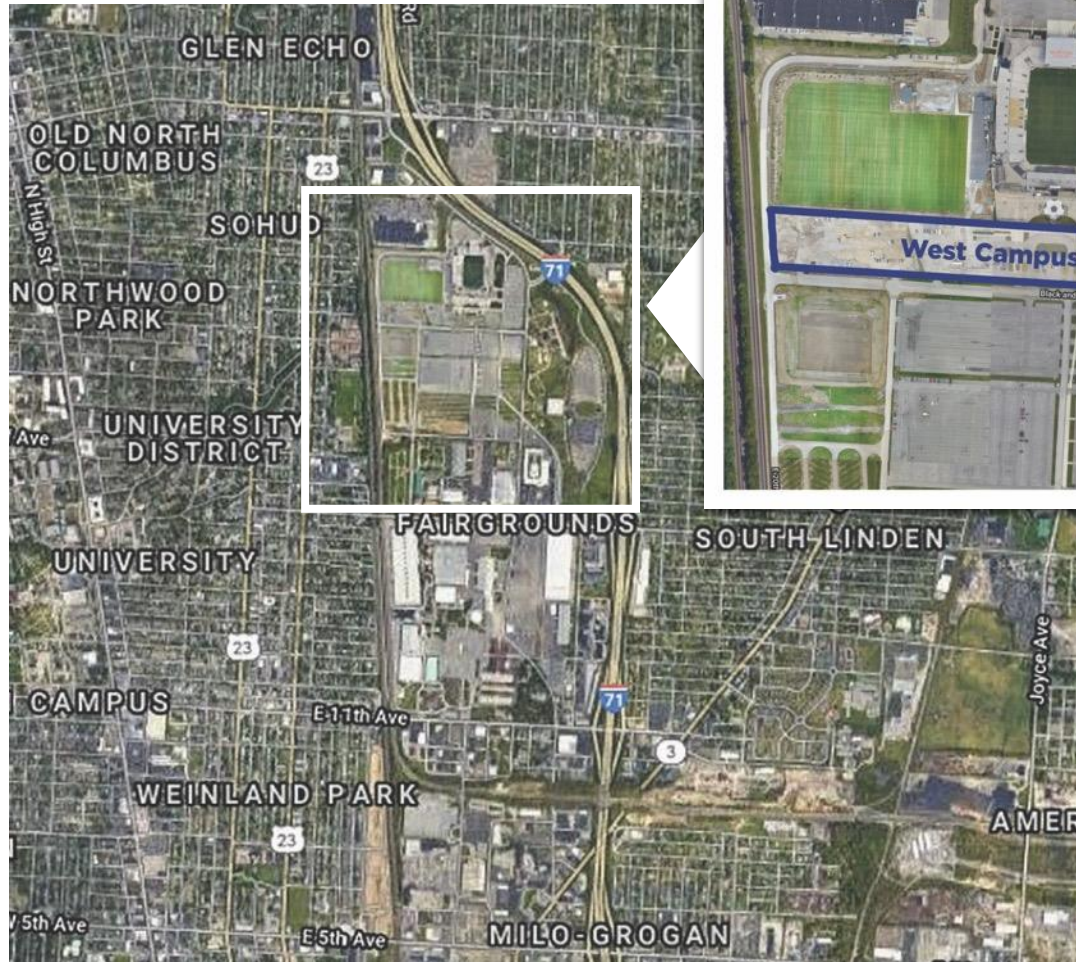
Geography

- Near-northeast side of Columbus, along Interstate 71, between East 17th Avenue and Hudson Street

Columbus Community Sports Park

Geography — 25 acres

- “West” campus — 17 acres
- “East” campus — 8 acres



Columbus Community Sports Park

Benefits

- **Neighborhoods**

- Once-in-a-lifetime opportunity to shape new green space, park space and recreational programming
- 200,000 residents live within three miles of the site
- Milo Grogan, Weiland Park, Linden, North Columbus, Glen Echo, Indianola Trace, University District, Clintonville and others

Columbus Community Sports Park

Benefits

- **The City** — Serve as a facility for youth and adult sports and provide more spaces for city-wide sports and recreational programming

Columbus Community Sports Park

Benefits

- **The Region** — Create a first-in-class, tournament-grade sports and recreation facility to grow Columbus as a destination for regional and state tournaments and events
- Boosts spending on local hotels, restaurants and other attractions

2 Primary Components

- Organized – formal - sports programs
- Informal sports and community park space



Organized Sports Program Spaces – COULD Include

- Multi-use wood courts
- Indoor field space
- Meeting rooms, classrooms
- Rock climbing wall



Organized Sports Program Spaces – COULD Include

- Outdoor, covered pickleball courts
- Concessions area
- Tournament-level synthetic turf field(s)



Informal Sports and Community Park Spaces – COULD Include

- Mixed-use grass field(s)
- Basketball courts
- Additional green space – outdoor courtyard, open shelters and picnic tables



Informal Sports and Community Park Spaces – COULD Include

- Walking and bicycling trails, with exercise stations
- Playground and/or splash pad
- Skate park



Stakeholder Feedback

Outreach and Engagement: Presentations

- Commissions, civic association
- Faith leaders
- Area non-profits



Community Feedback on Project Options

Survey to Residents, Promote via:

- CRPD Sports and CRP social media
- CRPD Sports and CRP emails
- CRPD Sports website
- Earned media
- Shared materials – presentation groups



Columbus Community Sports Park

Initial Key Dates

- Community outreach, engagement meetings: May-June
- Survey open for at least 30 days
- Report back on survey results and next steps in summer
- Sports Park construction process will be 18-24 months



Columbus Community Sports Park

Questions?



RECREATION AND PARKS
DEPARTMENT

Columbus Community Sports Park

Next Steps

- Take the survey: <http://bit.ly/ccspsurvey21>
- Get updates (LIVE SOON): crpdsports.org/communitysportspark

Columbus Community Sports Park

Thank you!



RECREATION AND PARKS
DEPARTMENT