



BROAD STREET ARTS & SENIOR CAMPUS

PUBLIC MEETING

AUGUST 18, 2022

AGENDA

INTRODUCTION

RAMA Consulting

PROJECT OVERVIEW & SCHEDULE

Columbus Recreation and Parks Department

COMMUNITY OUTREACH RESULTS

Pizzuti Solutions

DESIGN PROCESS

Moody Nolan

PUBLIC QUESTIONS & COMMENTS



PROJECT OVERVIEW & SCHEDULE

James C. Miller, PE -

Design and Construction Section Manager

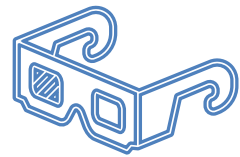
City of Columbus Department of Recreation and Parks

PROJECT OVERVIEW



BACKGROUND, PROJECT RECAP

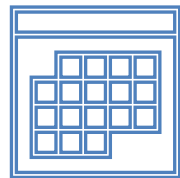
- Martin Janis & Golden Hobby Gift Shop
- Purchase of Douglass Elementary from Columbus City Schools



EVALUATION OF PROGRAMMING NEEDS



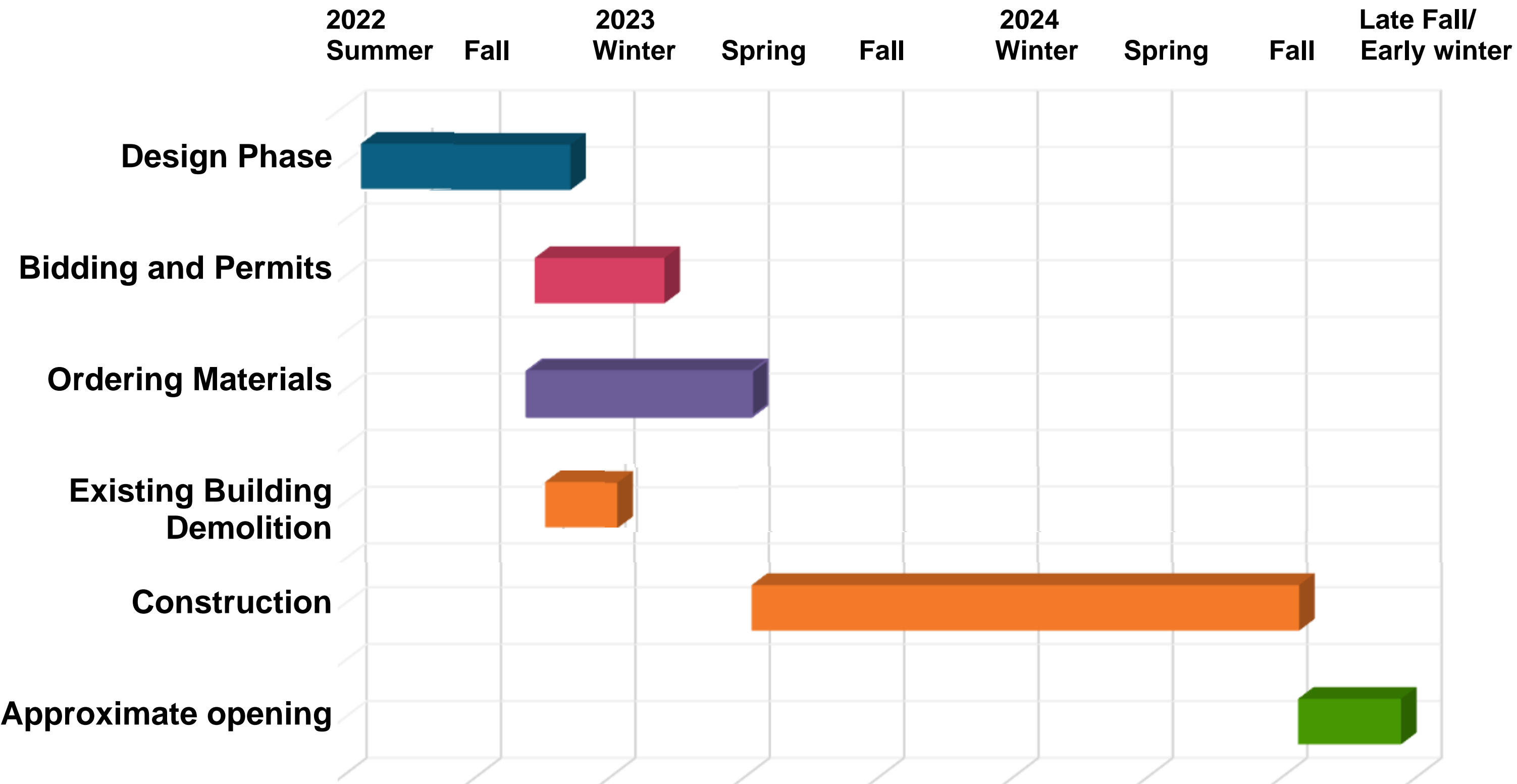
SELECTION OF DESIGN PROFESSIONAL - MOODY NOLAN



PROJECT DELIVERY, MILESTONE SCHEDULE



SCHEDULE



ENGAGING THE COMMUNITY

Ashley Senn - Project Manager

Pizzuti Solutions

ENGAGING THE COMMUNITY



MARTIN JANIS & GOLDEN HOBBY GIFT SHOP

Surveyed users and staff on best practices and ways a new facility could make their offerings more comprehensive.



COMMUNITY ORGANIZATIONS

- Engaged Neighborhood Liaisons to spread the word to community groups throughout the City
- Met with arts community stakeholders
- Presented to Olde Town East Neighborhood Association, Near East Area Commission, Monroe Street Neighbors



PROJECT WEBSITE - ColumbusRecParks.com/BASC

One-stop shop for updates and information



COMMUNITY SURVEY

- Available online and on paper in community centers
- 362 Responses, 77% of Respondents over 45



ENGAGING THE COMMUNITY - SURVEY RESPONSES

Top 3 creative programs residents would like to see:

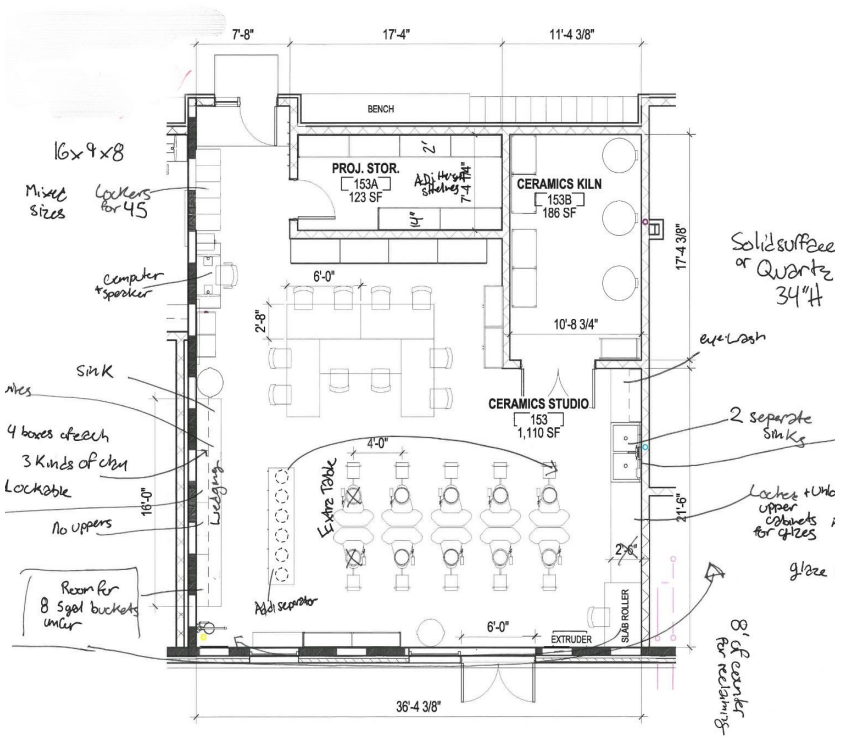
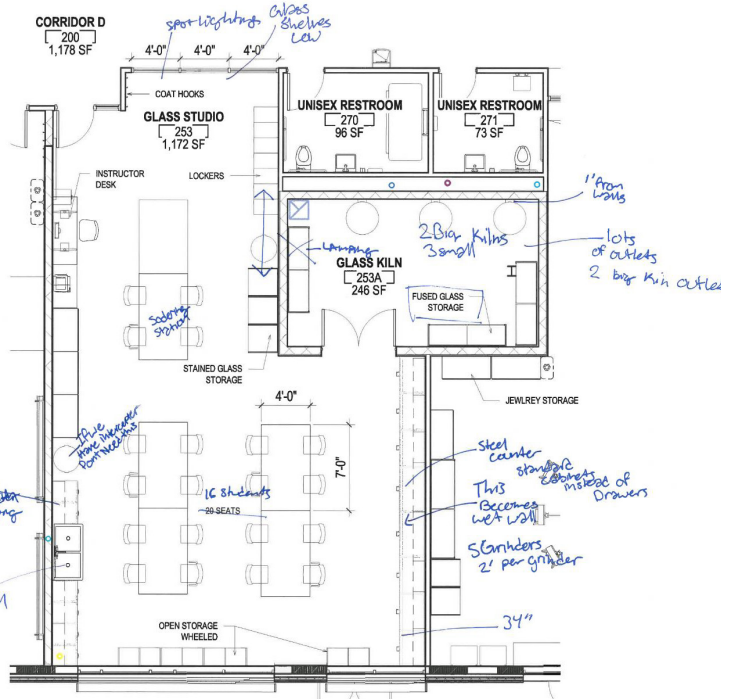
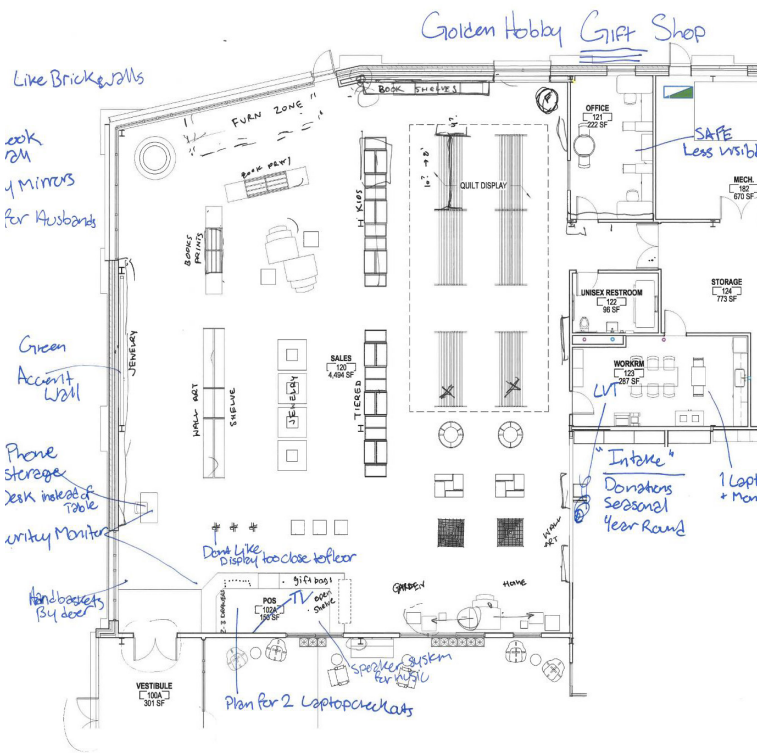
Painting	44%
Ceramics	43%
Other (please specify)	33%
Drawing	27%
Woodworking	27%
Jewelry Making & Beading	25%
Consignment of handmade art	20%
Language classes	19%
Music	17%
Knitting / crochet	16%
Theater	12%
Digital art	11%
Model trains	10%
Creative writing / poetry	10%

Top 3 greenspace amenities residents would like to see:

Paved walking path	53%
Public art	46%
A patio space for programming to be offered outdoors	44%
Gazebo or shade structure	38%
Benches	33%
Picnic tables	27%
Open grassy areas/ un-programmed greenspace	25%
Performance space	24%
Outdoor exercise stations/equipment	21%
Play space	15%
Other (please specify)	9%



ENGAGING THE COMMUNITY



DESIGN PROCESS

Howard Blaisdell - Associate Principal, Project Manager

Aubrey Bedard - Interior Designer

Alexandra Oetzel - Project Architect

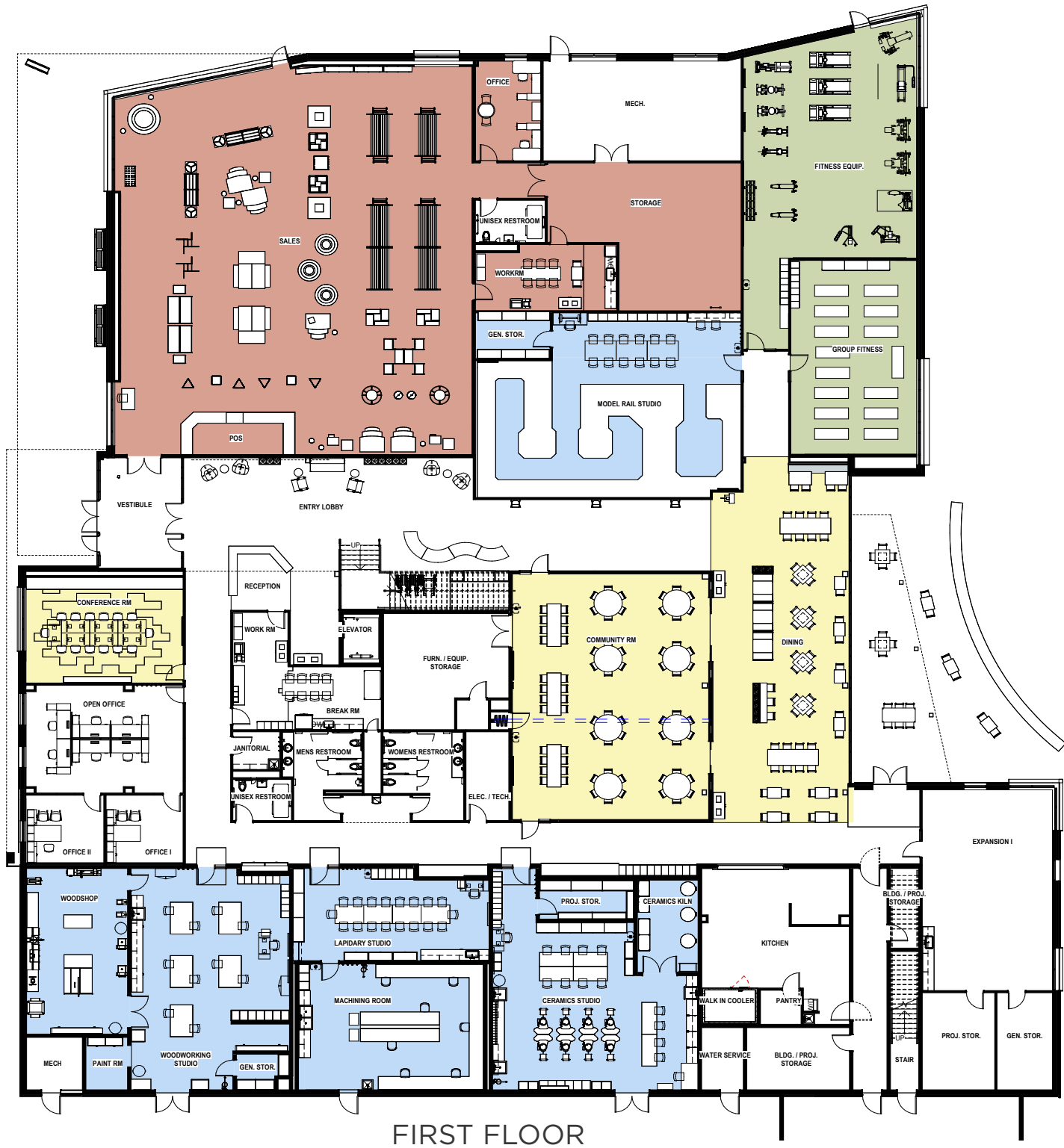
Moody Nolan, Inc.



SITE PLAN

FLOOR PLANS

- ROOM TYPE LEGEND
- STUDIOS
 - FITNESS
 - COMMUNITY / PUBLIC SPACES
 - GOLDEN HOBBY GIFT SHOP



GENERAL FINISH PALETTE



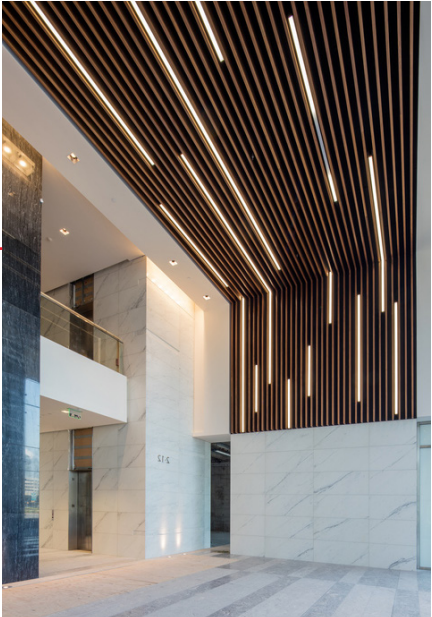
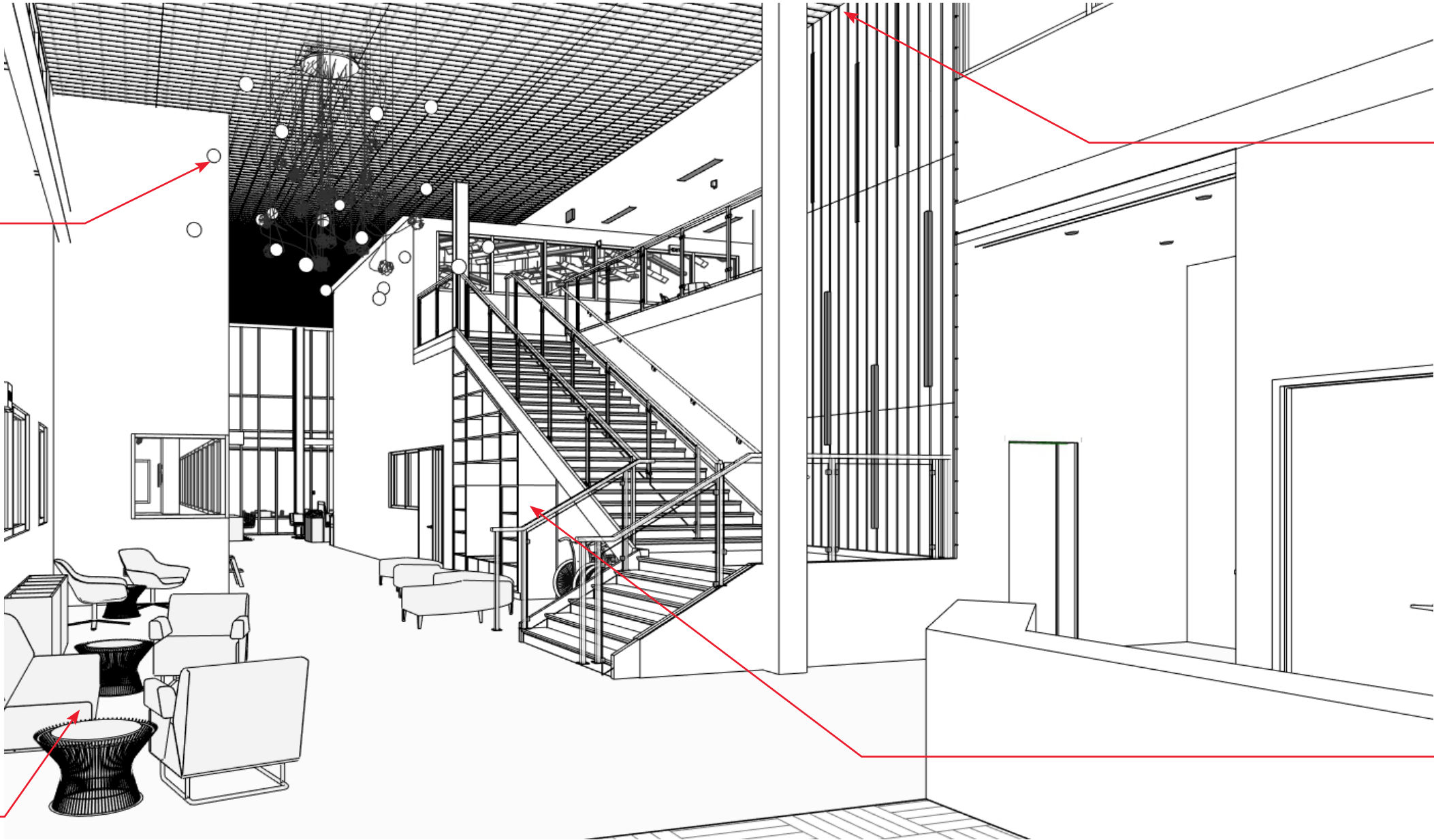
INTERIOR - MAIN ENTRY



LIGHTING



SEATING AREA



CEILING AND WALL

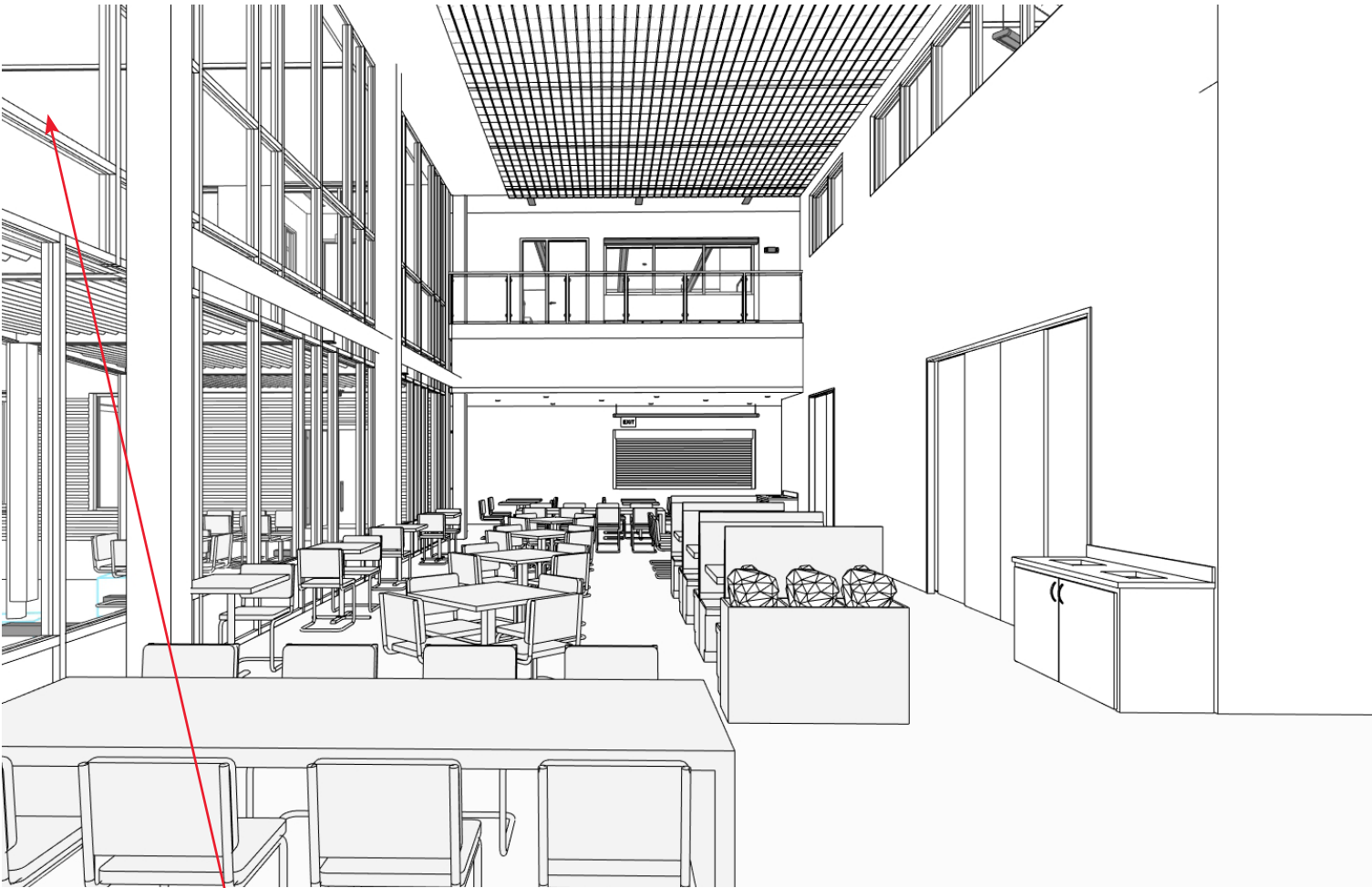


UNDER STAIRS NOOK

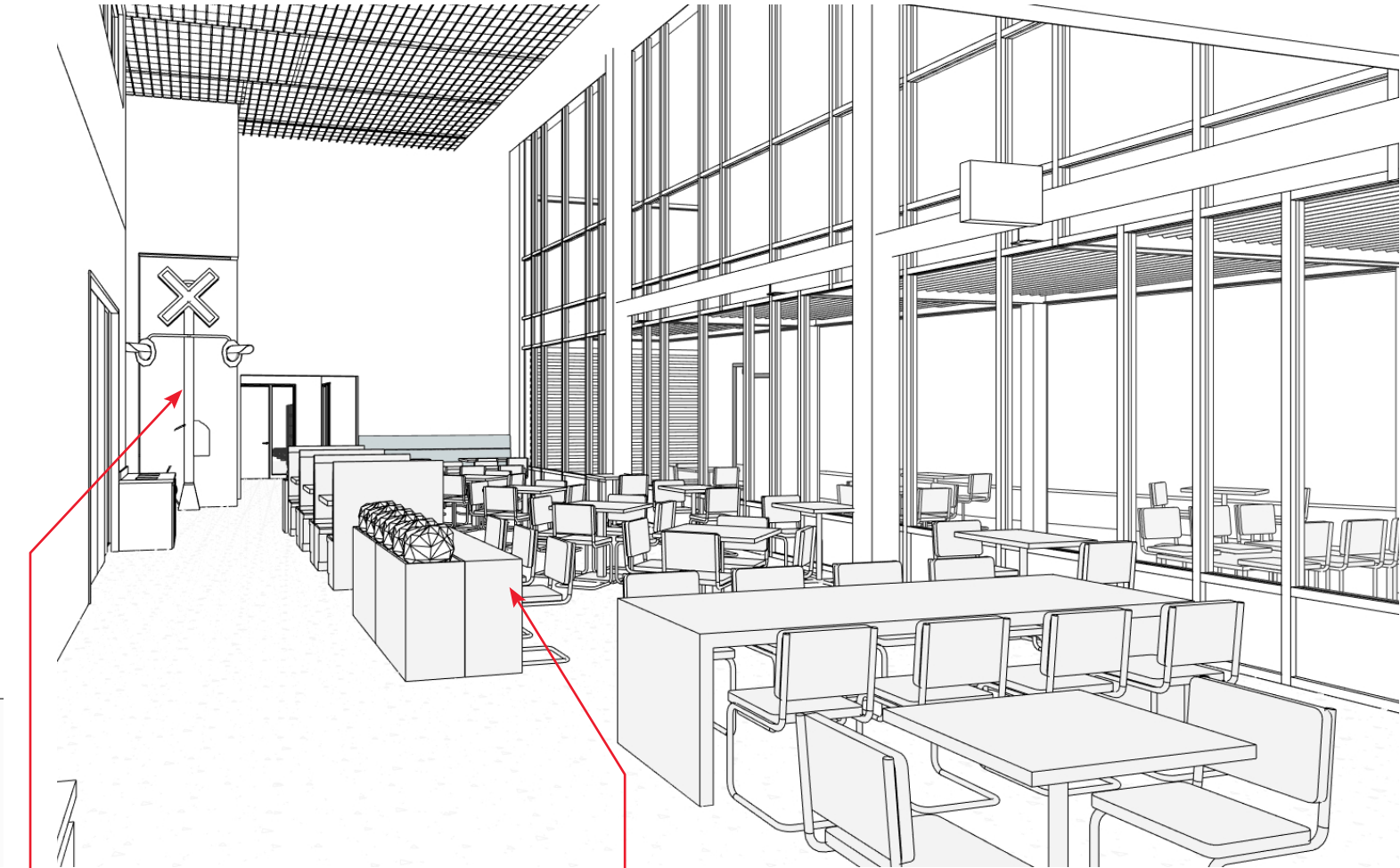


INTERIOR - COMMUNITY SPACES

DINING - LOOKING TO SERVERY



DINING - VIEW FROM SERVERY



STAINED GLASS LOOK



CROSSING SIGNAL

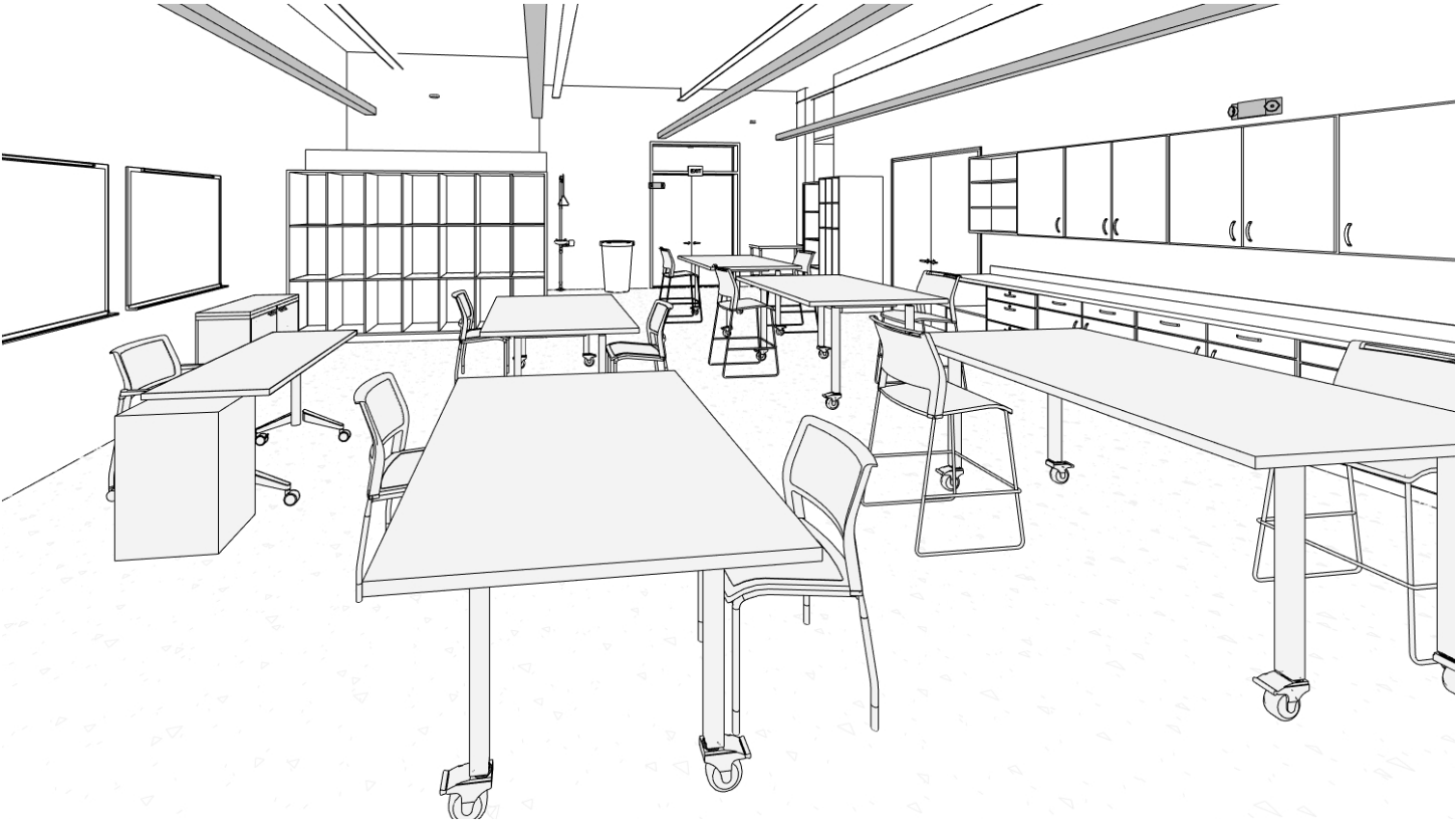


GROUP & INDIVIDUAL SEATING



INTERIOR - 1ST FLOOR CLASSROOMS

WOODSHOP



CERAMICS



INTERIOR - 2ND FLOOR CLASSROOMS

ART GLASS

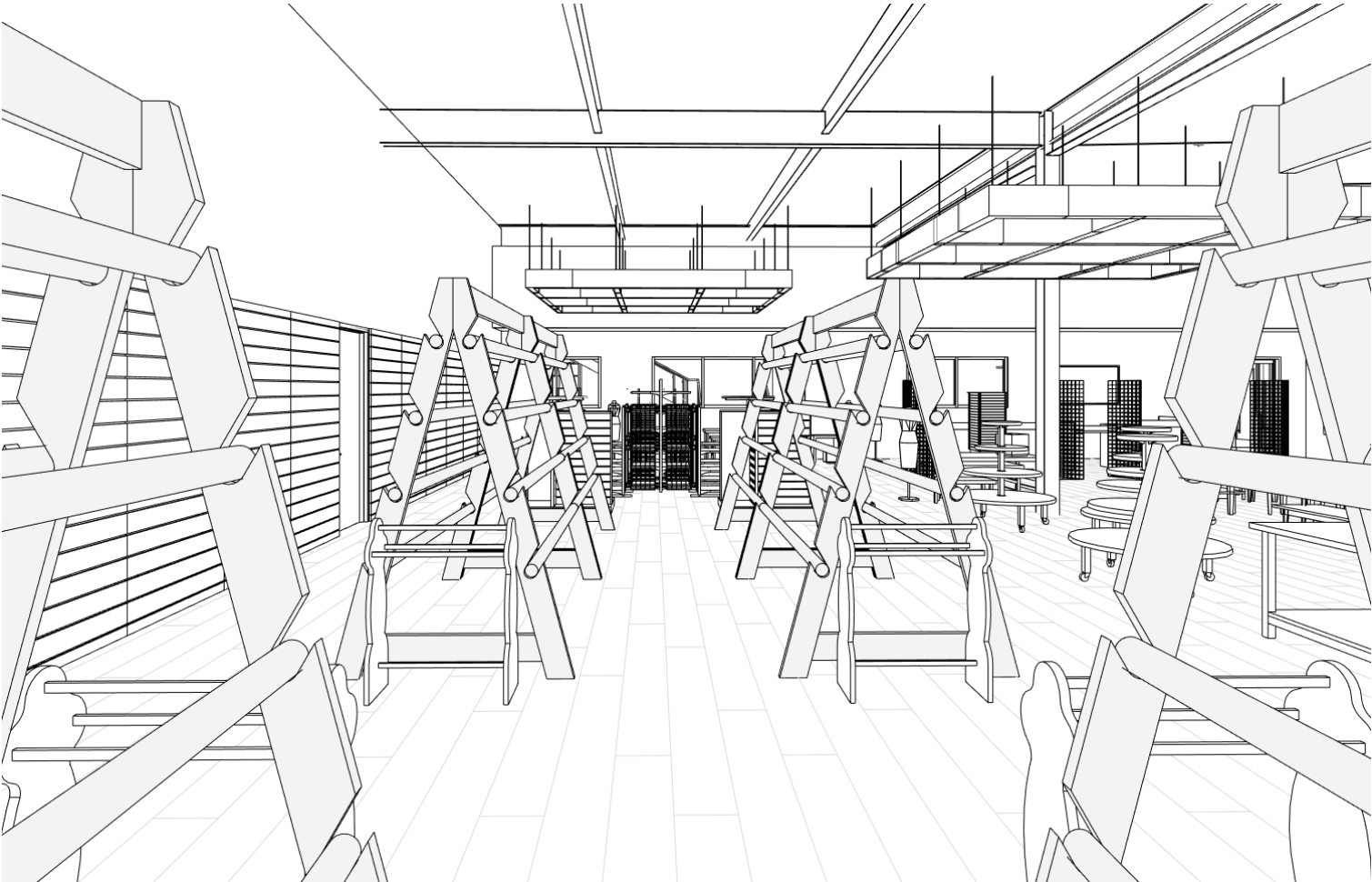


ARTS & CRAFTS



INTERIOR - RETAIL

GOLDEN HOBBY GIFT SHOP



GOLDEN HOBBY GIFT SHOP





WEST ELEVATION, PARKING & ENTRY





NORTHWEST CORNER, BROAD ST APPROACH



EAST ELEVATION, OUTDOOR DINING PATIO

PUBLIC QUESTIONS & COMMENTS



THANK YOU

<https://columbusrecparks.com/connect/about/capital-improvement-projects/basc/>