



# FIFTH BY NORTHWEST COMMUNITY STREET TREE INVENTORY SUMMARY REPORT



THE CITY OF  
**COLUMBUS**  
RECREATION AND PARKS

SPRING 2023

# TREE INVENTORY EXECUTIVE SUMMARY



## FIFTH BY NORTHWEST COMMUNITY

### PROJECT OVERVIEW

In 2022, the City of Columbus Recreation and Parks Department commissioned an update to the city's existing street tree inventory in the Fifth by Northwest neighborhood. This project directly supports the implementation of the recently completed Columbus Urban Forestry Master Plan, which establishes a vision and future goals for Columbus' urban forest.

### COMMUNITY OVERVIEW

Fifth by Northwest has an estimated population of 9,354 residents and contains 36 miles of city-maintained streets. The community encompasses 1.1 square miles of land area and accounts for 0.5% of the City of Columbus' total area. Current canopy cover within Fifth by Northwest is estimated to be 14%.

### VISION FOR THE URBAN FOREST

To prioritize, preserve, and grow the tree canopy in Columbus equitably across neighborhoods, to improve health and quality of life for all residents.

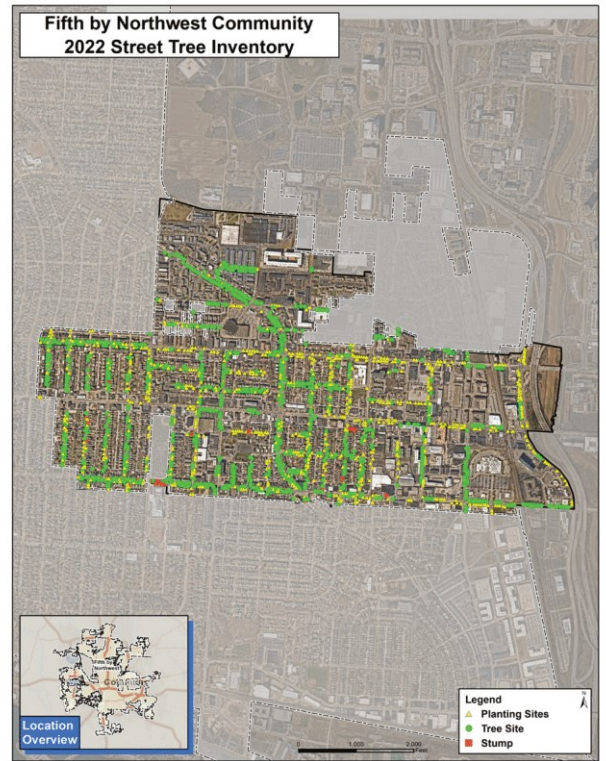
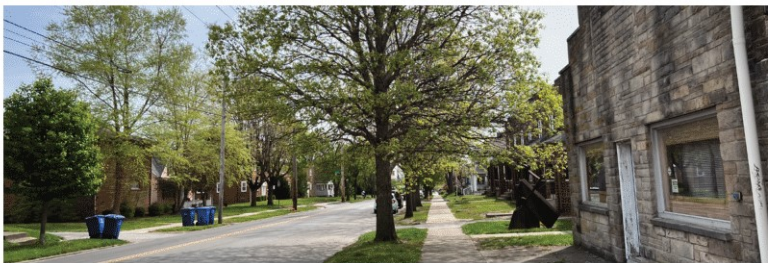
### COLUMBUS' URBAN FOREST GOALS



# 2,001

## Sites Inventoried

1,211 Trees      758 Planting Sites      32 Stumps



### OVERALL CONDITION OF FIFTH BY NORTHWEST'S INVENTORIED TREES: **GOOD**

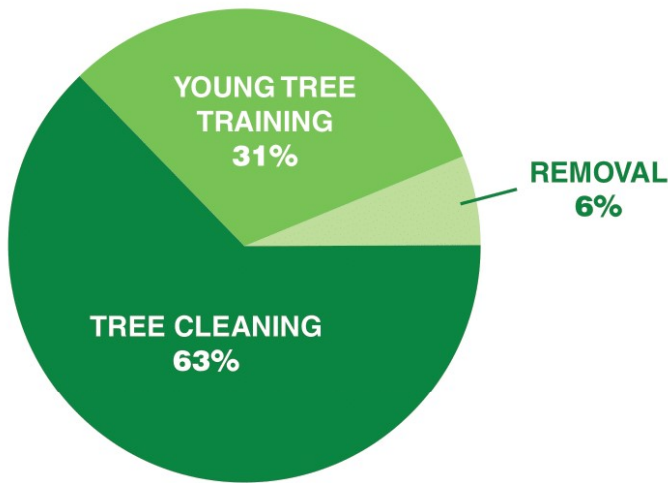


**Contact Info**  
City of Columbus  
Recreation & Parks Dept.  
1111 East Broad Street  
Columbus, Ohio 43205

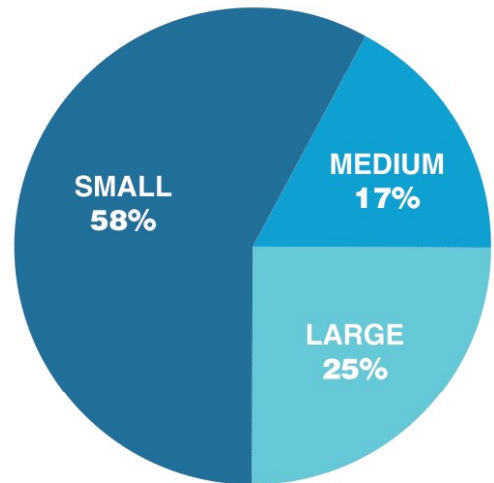


**Inventory Details**  
DRG's team of ISA Certified Arborists completed the tree inventory in 2022.

## TREES BY MAINTENANCE RECOMMENDATION



## PLANTING SITES BY TREE SIZE



**\$2.2 million**

Estimated value of Fifth by Northwest's inventoried street

**8.6 metric tons**

Annual CO<sub>2</sub> captured

**0.3 tons**

Annual air pollutants removed

**191,208 gallons**

Annual stormwater runoff intercepted



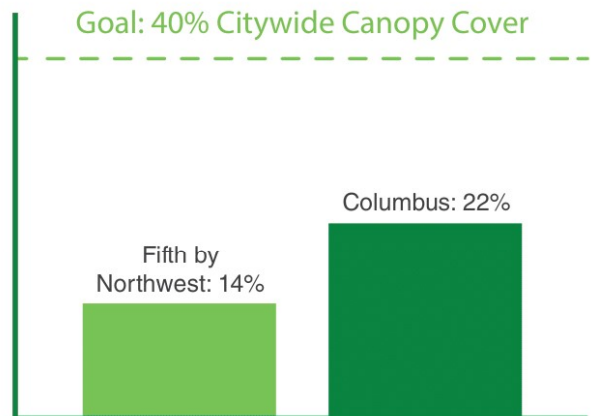
## CREATING EQUITABLE CANOPY COVER

Implementation of the following action steps will significantly increase canopy cover over time, provide greater value and more benefits to Fifth by Northwest's residents, and help the city realize its vision and achieve its goals for the urban forest.

### THE WAY FORWARD: ACTION STEPS

1. Preserve and maintain existing canopy.
2. Prioritize planting of large- and medium-size planting sites.
3. Develop neighborhood tree planting initiatives and community outreach focused on planting trees on private property.
4. Explore retrofitting existing street infrastructure and updating design standards to expand and improve available tree growing spaces.

Goal: 40% Citywide Canopy Cover



Current levels of community and citywide canopy coverage compared to the city's 2050 canopy goal.

### Contact Info

City of Columbus  
Recreation & Parks Dept.  
1111 East Broad Street  
Columbus, Ohio 43205

### Inventory Details

DRG's team of ISA Certified Arborists completed the tree inventory in 2022.

# TABLE OF CONTENTS

Executive Summary .....	i
Section 1: Structure, Composition, and Maintenance .....	4
Section 2: Tree Benefits .....	9
Section 3: Future Considerations .....	11

## FIGURES

1. Quantity of inventoried sites by site type .....	4
2. Species distribution of inventoried trees .....	6
3. Genus distribution of inventoried trees .....	6
4. Condition of inventoried trees .....	7
5. Distribution of relative tree age by diameter size class .....	8
6. Primary maintenance recommendations for 1,211 trees in the Fifth by Northwest neighborhood .....	9
7. Vacant planting sites by size .....	11

## MAPS

1. Sites inventoried during the 2022 Fifth by Northwest community street tree inventory .....	5
---	---

## TABLES

1. Tree age by growing size at maturity and diameter at breast height (DBH) .....	8
2. Estimated benefits provided by Fifth by Northwest’s street trees .....	10



*Notice of Disclaimer:* Inventory data provided by Davey Resource Group, Inc. “DRG” are based on visual recording at the time of inspection. Visual records do not include individual testing or analysis, nor do they include aerial or subterranean inspection. DRG is not responsible for the discovery or identification of hidden or otherwise non-observable hazards. Records may not remain accurate after inspection due to the variable deterioration of inventoried material. DRG provides no warranty with respect to the fitness of the urban forest for any use or purpose whatsoever. Clients may choose to accept or disregard DRG’s recommendations or to seek additional advice. Important: know and understand that visual inspection is confined to the designated subject tree(s) and that the inspections for this project are performed in the interest of facts of the tree(s) without prejudice to or for any other service or any interested party.

# SECTION 1: STRUCTURE, COMPOSITION, AND MAINTENANCE

The City of Columbus Recreation and Parks Department (CRPD) designated the street rights-of-way (ROW) within the Fifth by Northwest community as an area of interest for an on-going update to the city’s existing GIS-based public tree inventory. The Fifth by Northwest community street tree inventory supports the *Columbus Urban Forestry Master Plan (CUFMP)*.

## 2,001 SITES INVENTORIED

In 2022, DRG arborists performed field data collection and catalogued new data on potential viable planting sites, existing trees, and tree stumps located within the ROW of the Fifth by Northwest community (Figure 1 and Map 1).

### Of the 2,001 total inventoried sites:

- 60% = Existing street trees
- 38% = Potential planting sites
- 2% = Existing stumps

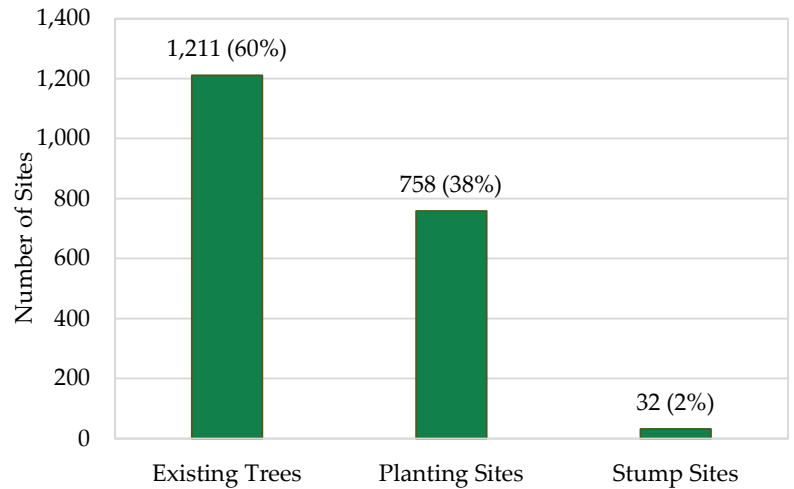


Figure 1. Quantity of inventoried sites, by site type.

### A wealth of vacant planting sites is an opportunity to increase tree canopy cover

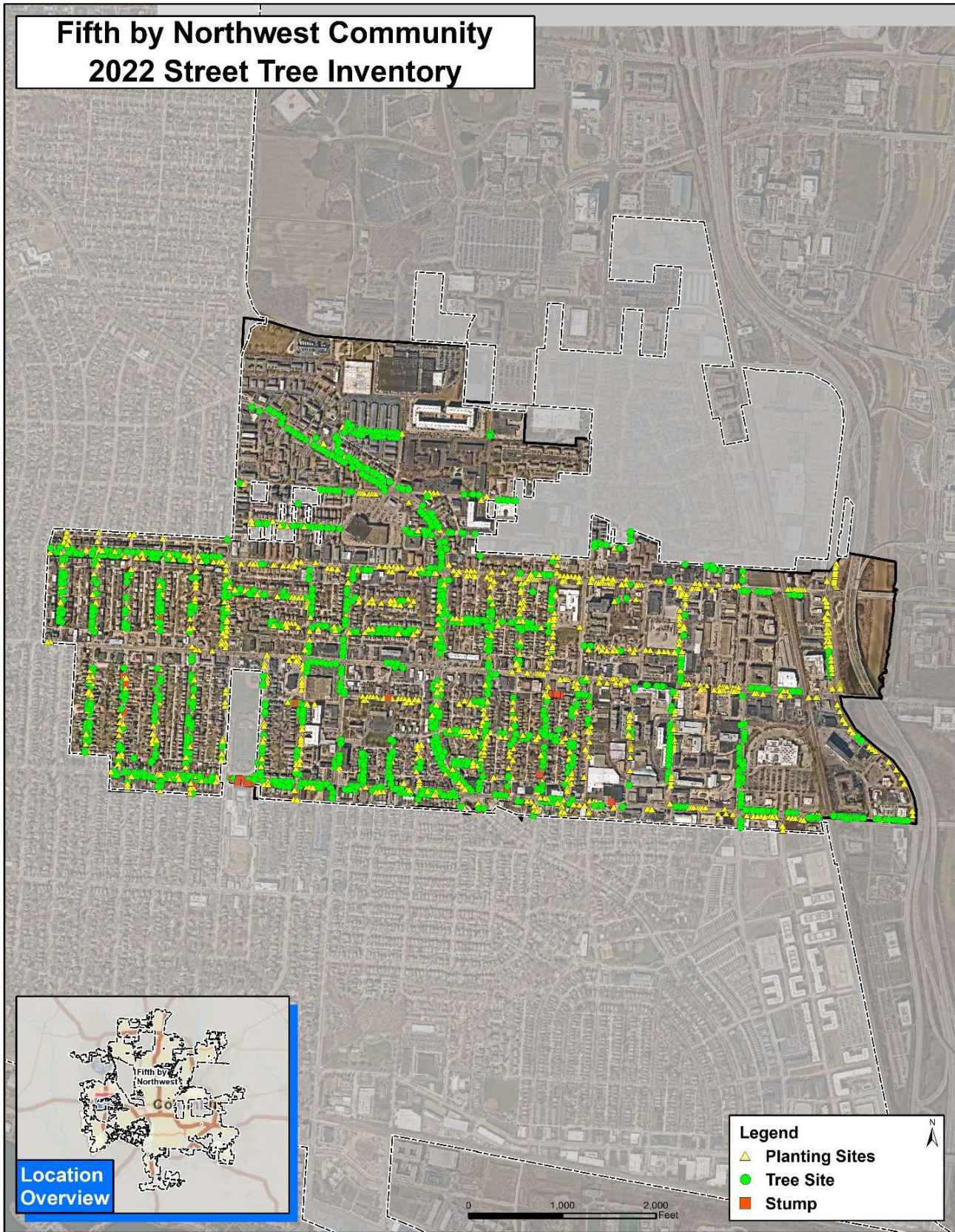
*Stocking level* is a forestry term used to report the ratio of existing street trees to the total number of suitable tree locations within the street ROW, which includes trees, stumps, and vacant planting locations.

**The stocking level of the Fifth by Northwest right-of-way is currently 60%.** The positive news is that the street ROW contains plenty of room and opportunity for canopy growth through future targeted planting efforts, which will be driven by the results of the inventory update and analysis.



DRG arborists identified vacant potential planting sites within Fifth by Northwest’s street rights-of-way (ROW), such as the one pictured here. Stocking the ROW with new tree plantings will help improve canopy coverage and increase the quantity of benefits trees provide to the community.

# Fifth by Northwest Community 2022 Street Tree Inventory



Map 1. Approximate locations of sites inventoried during the 2022 Fifth by Northwest community street tree inventory.

# IMPROVE TREE POPULATION DIVERSITY

Urban forest resiliency is positively correlated with tree population diversity; greater diversity helps reduce exposure to harmful pests and disease which can target individual tree species, groups of species, or even entire tree genera.

Species and genus diversity distributions offer a critical measure of a tree population’s resiliency to such attacks and help managers to identify and remedy potential areas of overexposure.

When assessing tree population diversity, it is widely accepted that **no more than 10% of an urban tree population should be composed of a single species and no greater than 20% from a single genus.**

## Species Distribution is Balanced

A total of 89 unique tree species were catalogued. Of the five most abundant tree species recorded during the inventory, no single species exceeded the 10% threshold (Figure 2). London planetree (*Platanus x acerifolia*) is the most abundant species found within the community’s street ROW, accounting for 8% of all inventoried trees.

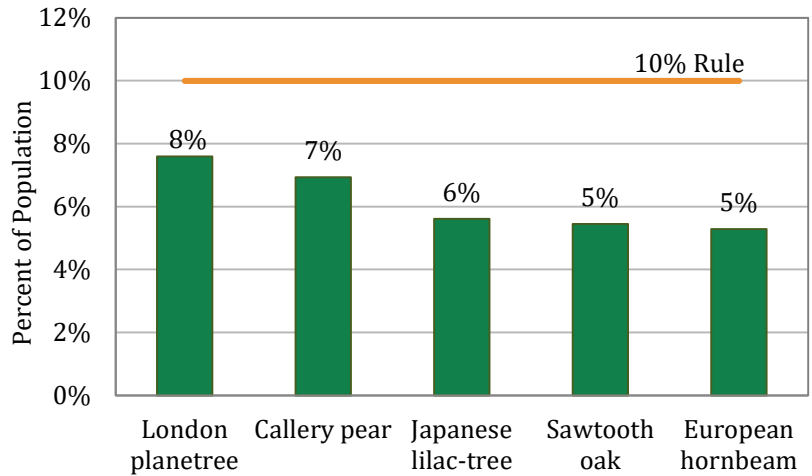


Figure 2. Species distribution of inventoried trees.

## Genus Distribution is Skewed

Fifth by Northwest has 43 unique tree genera, or groups of tree species, that are closely related (Figure 3).

The genus *Acer*, which is composed of maple trees, accounts for 24% of the entire inventoried population—higher than the suggested threshold of 20%.

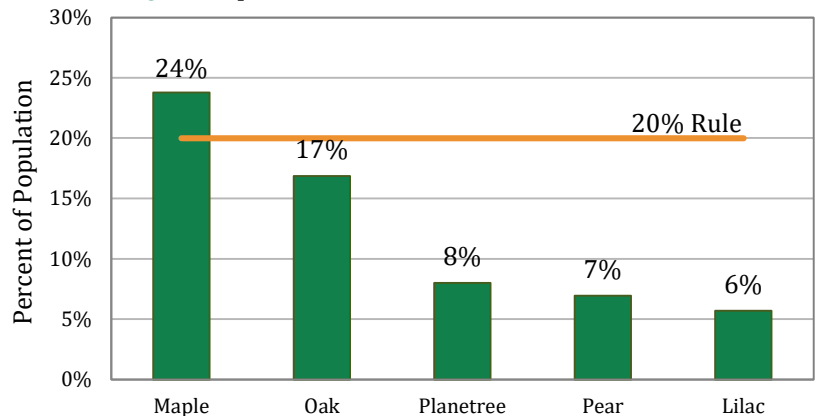


Figure 3. Genus distribution of inventoried trees.

## Maple Trees are Overrepresented

Future planting initiatives should minimize the installation of additional maple within Fifth by Northwest until representation of the genus *Acer* falls within the recommended 20% threshold.

Maple trees are susceptible to a variety of harmful pests and disease, including the fungal pathogen Verticillium wilt (*Verticillium* spp.) and the invasive Asian longhorned beetle (ALB, *Anoplophora glabripennis*). Improved genus diversity will reduce the potential for tree loss and help ensure long-term urban forest health and viability.



Above: Asian Longhorned Beetle. Photo: Jeff Tessner, DRG.

Left: Sugar maple with Verticillium wilt. Photo: Jerry Weiland, USDA-ARS.

# OVERALL TREE CONDITION IS GOOD

The condition of each inventoried tree was evaluated and rated as good, fair, poor, or dead. Several factors affecting condition were considered for each tree, including root characteristics, branch structure, trunk, canopy, foliage condition, and the presence of pests.

The general health of the inventoried tree population is characterized by the median average condition rating. Overall, **Fifth by Northwest’s street trees are in good condition** (Figure 4).

## Routine Inspections Are Key

Proactive monitoring helps identify, prevent, and mitigate concerns. Routine tree inspections are necessary to monitor for changes in tree condition, the presence of pests and/or disease, or the worsening of existing defects – particularly among trees rated in poor condition.

Poor condition ratings are generally due to visible signs of decline and stress, such as decay, dead limbs, or discolored foliage. If retained, these trees will likely require corrective pruning and intensive plant health care to improve their vigor. Dead trees and trees with defects that cannot be remedied should be removed as soon as possible.

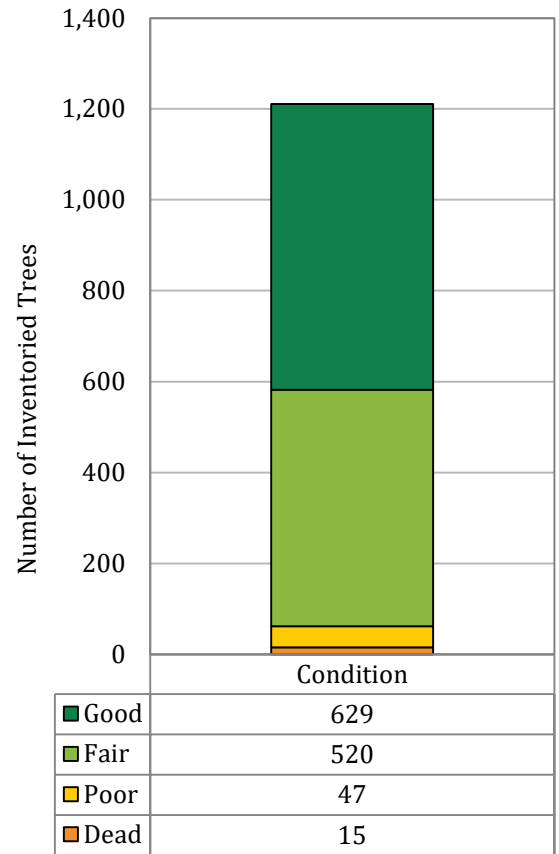
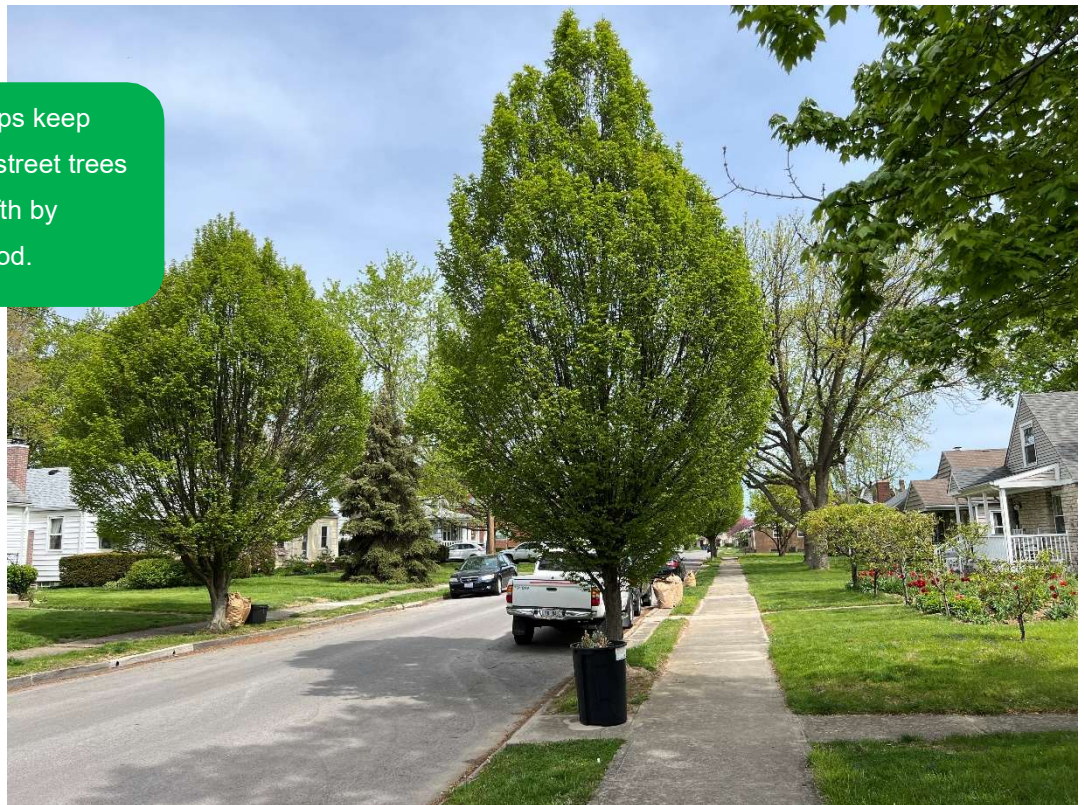


Figure 4. Condition of inventoried trees

Routine inspection helps keep trees healthy, like the street trees pictured here in the Fifth by Northwest neighborhood.





# TREE DIAMETER-AGE DISTRIBUTION

Understanding the relative age of a tree population can help planners align future management strategies with current policy goals. To determine relative tree age, DRG first categorized Fifth by Northwest’s inventoried tree population by small- and large-growing trees and then assigned each tree to an age grouping based on the tree diameter measured at breast height (DBH) as outlined in Table 1.<sup>1</sup>

**Table 1.** Tree age by growing size at maturity and diameter at breast height (DBH).

Relative Tree Age	Large-Growing		Small-Growing		Combined
	DBH	Quantity	DBH	Quantity	Quantity
Young	0–8"	421	0–4"	104	525
Established	9–17"	401	5–8"	79	480
Maturing	18–24"	63	9–12"	59	122
Mature	> 24"	60	>12"	23	83

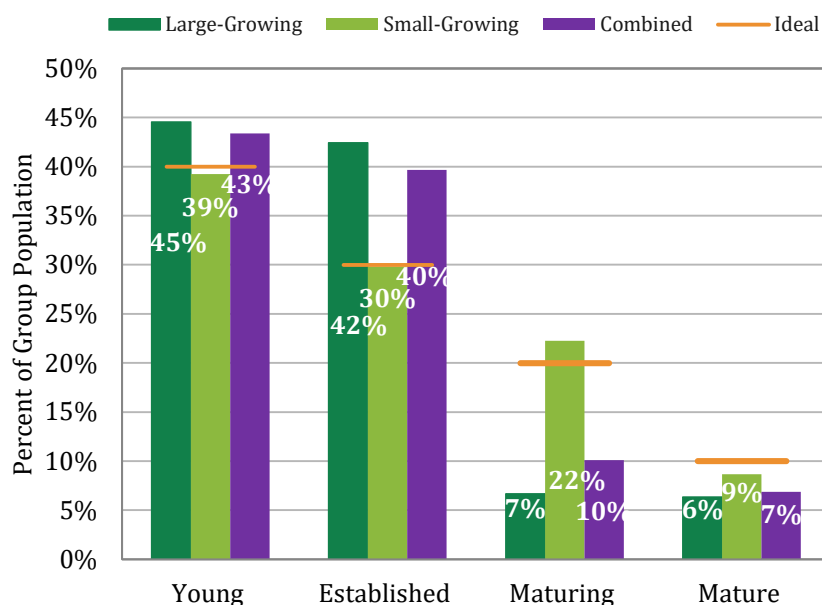
The relative age distribution of Fifth by Northwest’s inventoried tree population was then compared to an ideal distribution for an expanding urban forest, which suggests the tree population composition be equivalent to 40% young trees, 30% establishing, 20% maturing, and 10% mature trees (Figure 5).

## An Overabundance of Young and Established Trees

Overall, 43% of Fifth by Northwest’s inventoried trees are classified as young, compared to an ideal level of 40%, and 40% are classified as established, far exceeding the ideal threshold of 30%. Any overabundance of one age class has the potential to create a management issue in the future as they grow old and need removal and replacement. Proactive removal and replacement at an appropriate rate may relieve this issue. Future maintenance should prioritize activities that help establish these young trees in the urban landscape through pruning to train future tree growth, watering programs, and routine tree health inspections.

## Maturing and Mature Trees are Not Well Represented

There is not a good representation of maturing and mature trees from large or small size classes in Fifth by Northwest, with only 10% of trees falling into the maturing size class compared to an ideal threshold of 20%, and 7% of trees falling into the mature size class compared to an ideal threshold of 10%. This indicates that Fifth by Northwest’s residents are missing out on the many benefits provided by mature trees. Proactive maintenance will help ensure that the existing mature and maturing trees continue to provide canopy, while also prioritizing tree care practices such as young tree training and integrated pest management to help young trees reach maturity.



**Figure 5.** Distribution of relative tree by diameter size class.

<sup>1</sup> Tree size is only a rough approximation of tree age; tree size alone is not a definitive or appropriate measure of tree age. In the urban environment in particular, numerous factors play a role in determining tree size, including the availability of water, soil, and sunlight, proper tree care and planting techniques, the presence of pests and pathogens, etc.

## TREE MAINTENANCE RECOMMENDATIONS

During the inventory, DRG arborists assigned a primary recommended maintenance activity to each of the 1,211 inventoried trees (Figure 6).

City managers generally prioritize maintenance activities by risk. For example, a large dead tree by a busy intersection should be removed before a small dead tree at the end of a little-used secondary street.

## PRIMARY MAINTENANCE CATEGORIES

### Tree Cleaning = 766 Trees

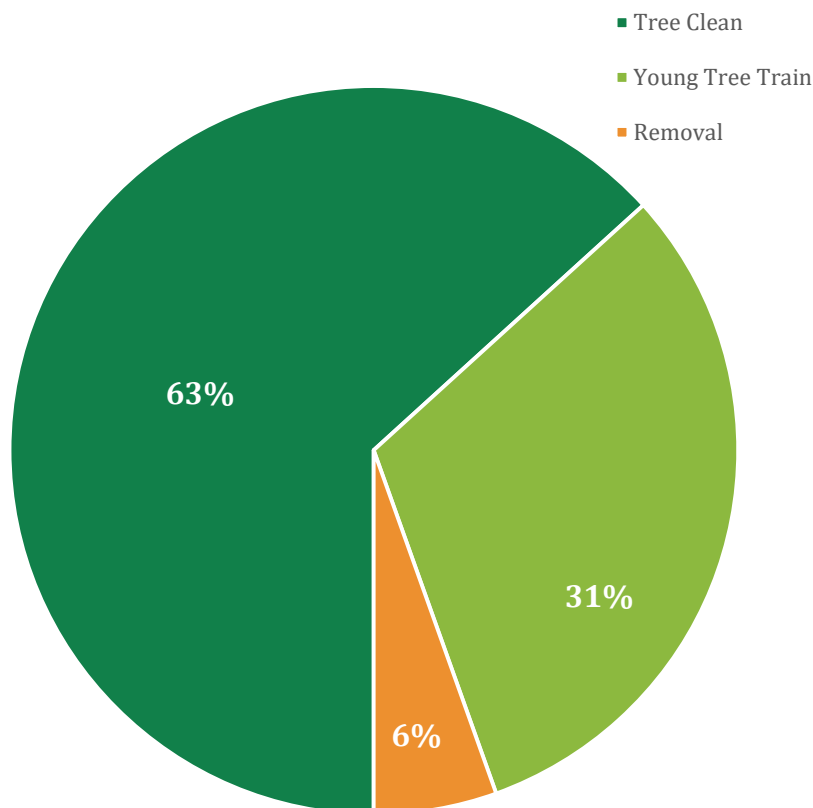
Tree cleaning describes pruning to remove dead, dying, broken, decayed, and/or crossing limbs. Trees in this category are recommended for inclusion in a regularly scheduled, routine maintenance program. Over time, routine pruning minimizes the occurrence of reactive maintenance.

### Tree Removal = 66 Trees

Within Fifth by Northwest, 66 trees are designated for removal. City Forestry only removes trees that are hazardous: either dead, dying, or dangerous to public safety.

### Young Tree Training = 379 Trees

Younger trees can have branch structures that lead to potential problems as the tree ages. These trees should be pruned to train future growth patterns and correct or eliminate weak, interfering, or objectionable branches to minimize future maintenance requirements.



**Figure 6.** Primary maintenance recommendations for 1,211 trees in the Fifth by Northwest neighborhood, by type.

## SECTION 2: TREE BENEFITS

### STRUCTURAL VALUE OF FIFTH BY NORTHWEST'S STREET TREES: \$2.15 MILLION

Trees are critical to public health and contribute significantly to quality of life for every community resident. In addition to improving air quality, water quality, and alleviating heat stress, trees provide significant social benefits such as reducing mental stress, encouraging greater neighborhood-level involvement, and fulfilling spiritual and aesthetic needs. **Structural value calculates the cost it would take to replace trees, meaning that all of the street trees in Fifth by Northwest are estimated at \$2.15 million.**

Because of the significant value of these benefits, cities across the country now recognize trees are critical infrastructure. In fact, they are the only type of infrastructure that increases in value over time and have been proven to pay for themselves. Urban trees in the Midwest consistently provide benefits value three times more than the cost to maintain them.<sup>2</sup>

The 1,211 street trees inventoried within the Fifth by Northwest community provide an ecosystem value \$85,644 through air filtration, water quality improvements, and carbon storage –and those are just the benefits quantified by this analysis (Table 2). Trees also boost property values, reduce energy costs, lower crime rates, and help create more successful business districts.<sup>3</sup>

**Table 2.** Estimated benefits provided by Fifth by Northwest's street trees.

Category	Value
Ecosystem Services	\$85,644
Structural Value	\$2,150,715
<b>Combined Value</b>	<b>\$2,236,359</b>
<b>Per-Tree Average</b>	<b>\$1,847</b>

## ECOSYSTEM SERVICES

### Annual Carbon Captured – 19,004 pounds

As the primary greenhouse gas driving climate change, carbon dioxide (CO<sub>2</sub>) impacts people, property, and the environment. Trees are carbon sinks—constantly absorbing CO<sub>2</sub> from the atmosphere and storing it within tree tissue. Over the course of their lifetime, Fifth by Northwest's inventoried trees have captured over 417 metric tons of carbon. Using trees to sequester CO<sub>2</sub> is a key part of the *Columbus Climate Adaptation Plan's* goal to make the city more resilient.

### Annual Air Pollution Removed – 683 pounds

Ozone and particulates can especially aggravate existing respiratory conditions (like asthma) and create long-term chronic health problems. Trees absorb gaseous pollutants such as ozone during respiration and intercept particulate pollutants, such as PM<sub>2.5</sub>, from entering the atmosphere by trapping them on plant surfaces.

### Annual Rainwater Intercepted – 191,208 gallons

As cities grow, land that naturally absorbs rainwater (i.e., lawns, parks, fields) tends to be replaced by hard surfaces that cause rain to runoff (i.e., roads, buildings, parking lots). Rainwater flowing over these hard surfaces accumulates pollutants, and the contaminated stormwater flows into overloaded sewers, ultimately reaching the local lakes and streams. Polluted water is a major cause of human health issues and degrades the local ecology. Tree leaves intercept rainwater as it falls, which slows the rate at which stormwater enters sewer systems.

### Structural Value – \$2.15 million

Structural value represents the cost to replace a given tree with an identical one. Structural value increases over time as more trees are planted and existing trees mature. The total value of the Fifth by Northwest community forest will grow considerably in future years as more trees are planted, existing trees are maintained and become healthier, and the city works toward achieving the goals of the *Columbus Urban Forestry Master Plan*.

<sup>2</sup> Peper, Paula J.; McPherson, E. Gregory; Simpson, James R.; Vargas, Kelaine E.; Xiao, Qingfu. 2009. Lower Midwest community tree guide: benefits, costs, and strategic planting. Gen. Tech. Rep. PSW-GTR-219. Albany, CA: U.S. Forest Service, Pacific Southwest Research Station. 115 p.

<sup>3</sup> [See the Columbus Urban Forestry Master Plan for in-depth discussion on tree benefits and their impact on the city's residents.](#)

## SECTION 3: FUTURE CONSIDERATIONS

Every neighborhood deserves access to the benefits trees provide. With an estimated 14% canopy cover in Fifth by Northwest, retaining and growing canopy cover in the neighborhood is crucial for achieving citywide urban tree canopy goals. Realizing the vision and achieving the goals of the *Columbus Urban Forestry Master Plan* will take planned strategic effort guided, in part, by data analysis and application.

### 758 POTENTIAL PLANTING SITES

A key objective of the tree inventory update is to catalog and analyze growing spaces along the neighborhood's street ROW. Analysis results will inform future planting initiatives and help ensure the selection of the most appropriate tree species given the available growing spaces within the neighborhood.

**DRG arborists found a total of 758 vacant sites suitable for planting trees<sup>4</sup>** (Figure 7). Vacant planting sites were evaluated for suitability for trees and characterized by size and type. DRG considered the presence of existing utilities, overhead lines, and distances from stop signs, fire hydrants, driveways, and other existing infrastructure in the evaluation of planting sites. Over half of these sites (58%) can only accommodate trees species that are small-sized at maturity (Figure 7).

#### 442 Small Planting Sites

- Best suited for small-maturing trees.
- Minimum width of 3 to 5 feet.
- Located at least 20 feet from another tree.
- Includes all sites with overhead utilities, regardless of site width.

#### 129 Medium Planting Sites

- Best suited for medium-maturing trees.
- Minimum width of 5 to 7 feet.
- Located at least 30 feet from another tree.

#### 187 Large Planting Sites

- Best suited for large-maturing trees.
- Minimum width of greater than 7 feet.
- Located at least 40 feet from another tree.
- The highest quality potential planting site.

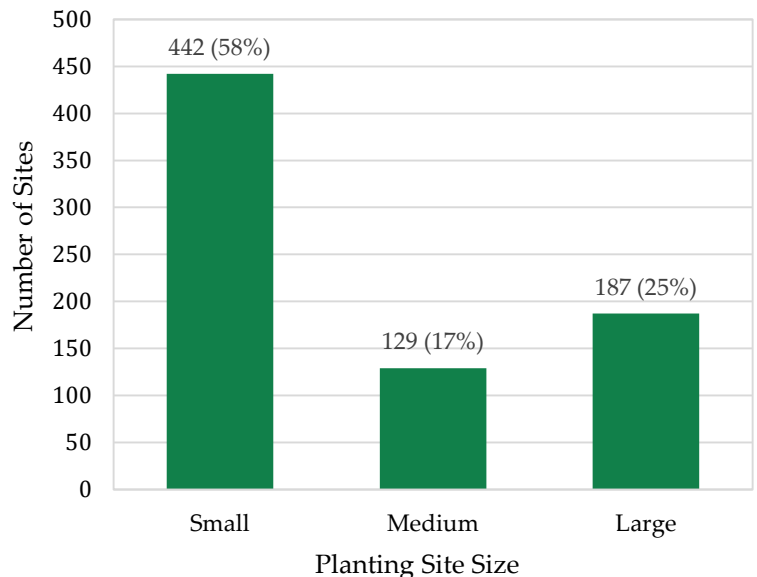


Figure 7. Vacant planting sites by size.

## PLANTING CONSIDERATIONS

**Site Selection:** Urban environments constrain what tree species are appropriate. Existing infrastructure such as utilities and sidewalks, growing space size, and other trees all impact what tree is appropriate for a site.

**Tree Selection:** Tree species should be resilient to the urban environment, diverse, and the appropriate height and width for the growing space.

Blocking an unsightly view or creating shade may be a priority, but the impact of a tree on its environment – and vice versa – must be considered. Sustainable and successful planting initiatives select tree species that thrive and flourish in the chosen planting location in a way that harmonizes with the surrounding urban environment.



<sup>4</sup> All planting locations will require further investigation by the city and CRPD prior to any final determination of suitability for planting.

## AN ABUNDANCE OF PLANTING SITES

**The good news:** Planting sites are readily available. With 758 potential planting locations, the neighborhood's street ROW is currently at just over half of its maximum capacity for trees. The quickest way to improve canopy cover is to plant more trees.

**The less good news:** The majority of available sites, 58%, are only suitable for small trees (Figure 7). Smaller-maturing trees do not provide as many benefits as larger-maturing trees, nor do they provide as much canopy cover. However, a small tree is better than no tree, and small planting sites should still be utilized for planting by CRPD.

## THE WAY FORWARD: ACTION STEPS

Investing in equitable canopy does not just entail increasing overall tree canopy cover through planting, but also addressing the quality of the trees, caring for the existing trees, planning for trees within the different land uses and infrastructure, and reaching out to residents about the importance of trees.

In Fifth by Northwest, tree planting is needed to be in line with the city's canopy goals, and the community will benefit from equitable investment to maintain and grow that canopy. Though there is an abundance of available planting locations, their smaller size diminishes their potential for improving the urban forest. Given this set of facts, what can be done in Fifth by Northwest to maximize growth of the neighborhood forest for the benefit of its residents, stakeholders, and the entire City of Columbus?

### Maintain and Preserve Existing Trees (Near-Term)

It takes a long time for a young tree to become a large, stately mature shade tree. Preserving what is already there is a major component of an urban forest growth strategy.

### Prioritize Planting of Large and Medium Sites (Short-Term)

Larger trees provide residents with greater benefits. Within Fifth by Northwest, 187 large and 129 medium sites were identified. Planting in these locations will increase the amount of street trees by 26% and provide a solid foundation for maintaining and improving community canopy cover.

### Explore Planting Beyond the Right-of-Way (Intermediate-Term)

Where insufficient space or overhead utilities restrict available planting options, planting on private property can allow for the selection of more desirable tree species. Urban forestry stewardship on private property will require education and outreach initiatives, as well as easy and low-cost access to trees.

### Expand Right-of-Way Growing Spaces (Intermediate to Long-Term)

Future policy initiatives should consider options to improve available grow space, including retrofitting existing infrastructure and implementing design standards that provide adequate grow space for trees within street rights-of-way. Examples include the addition of bump-outs, expanding the size of tree lawns during utility or development projects, and exploring the use of green infrastructure technologies (e.g., silva cells, structural soils). Ensuring canopy equity requires sufficient growing space for trees to survive and thrive in an urban setting.