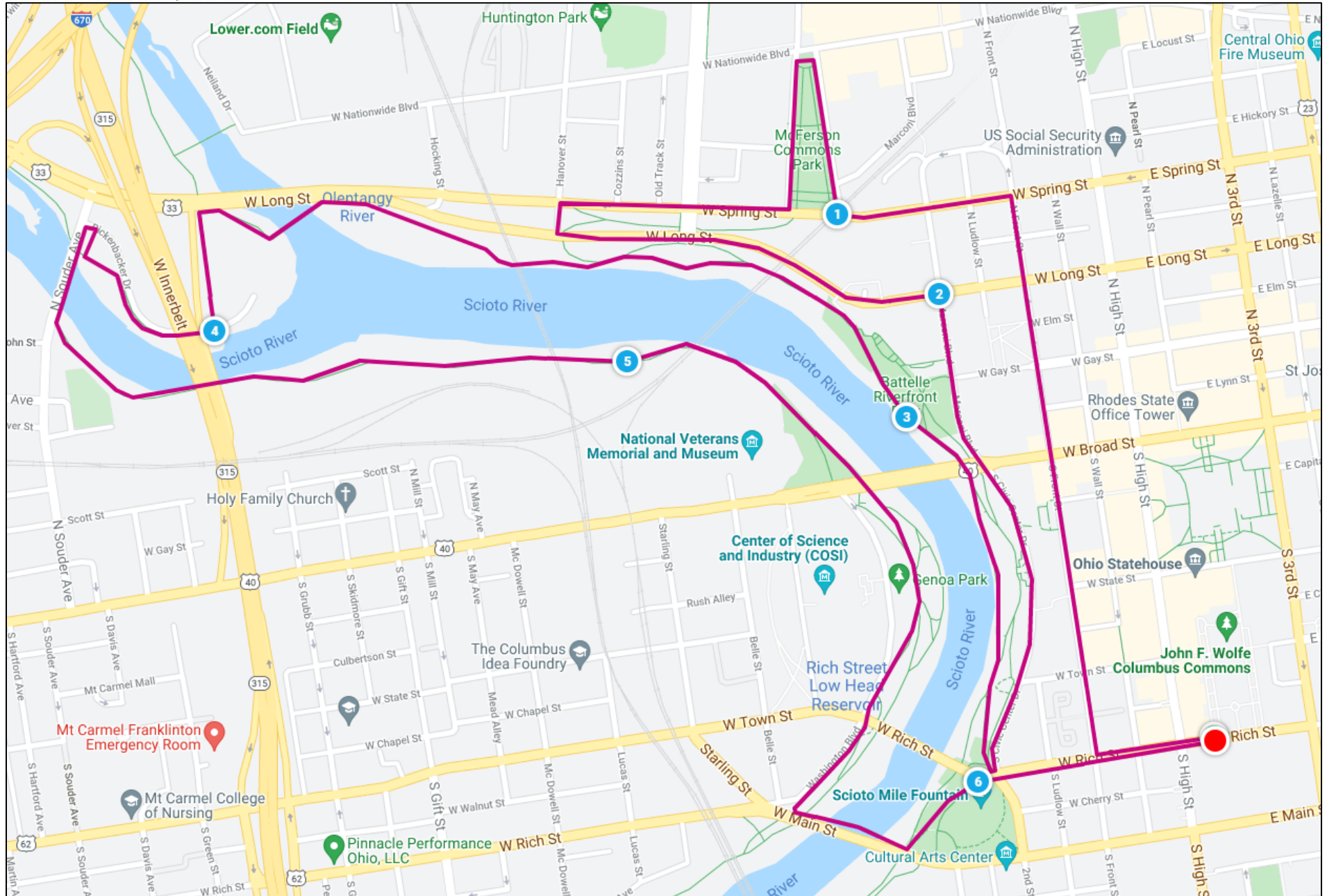


## Columbus Commons 3

### 6.2 Miles



Course Capacity: 5K-10,000 / 10K-1,000

# Columbus Commons 3

Exit the Columbus Commons on Rich St

Head west on Rich St

Turn right (north) on Front St

Turn left (west) on Spring St

Turn left (north) on West St

Turn left (west) on the sidewalk at the north end of McFerson Commons, staying off of Nationwide Blvd

Turn left (south) on John H McConnell Blvd using the east side of the street

Turn right (west) on Spring St

Turn left (south) on Hanover St

Turn left (east) on Long St

Turn right (south) on Marconi Blvd

Continue south on Civic Center Dr

Access the bike path at Rich St and Civic Center Dr and turn right (north)

Exit the Bike path at Rickenbacker Dr and Souder Ave

Turn left (south) on Souder Ave and cross over the river

Reenter the bike path on left (east)

Exit the bike path at Washington Blvd and Town St

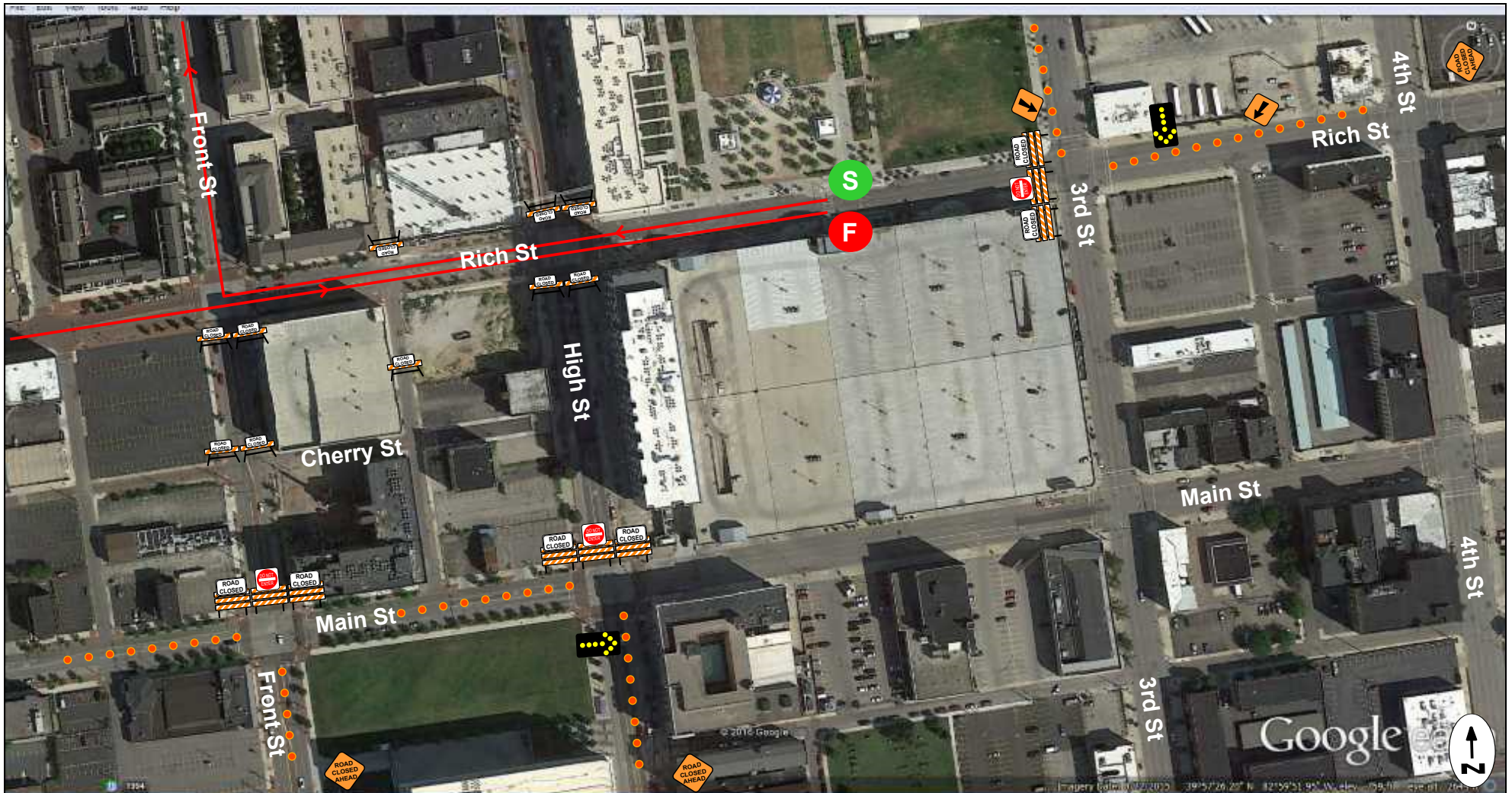
Continue south on Washington Blvd and enter the sidewalk

Turn left (east) on the Main St Bridge walking path

Turn left (north) on the path through Bicentennial Park

Exit Bicentennial Park at Rich St and Civic Center Dr

Continue on Rich St back to Columbus Commons



## Columbus Commons 3-1

### Devices:

- 3 'Road Closed Ahead' Signs
- 2 Diagonal Arrow (OW-138) signs
- 9 10' Type III Barricades
- 16 'Road Closed' signs
- 3 'Do Not Enter' signs
- 10 Type I Block Party Barricades
- 2 Flashing Arrow Panels
- ~ 70 28" Cones with reflectors

### Instructions:

- Close South bound curb lane of 3rd St @ Rich St - 10 Cones
- Close 2 West bound lanes of Rich St between 3rd and 4th - 20 Cones
- Close North bound left lane of High St @ Main St - 10 Cones
- Close North bound left turn lane of Front St @ Main - 10 Cones
- Close East bound left turn lane of Main St @ Front St - 10 Cones
- Close East bound left turn lane of Main St @ High St - 10 Cones





## Columbus Commons 3-2

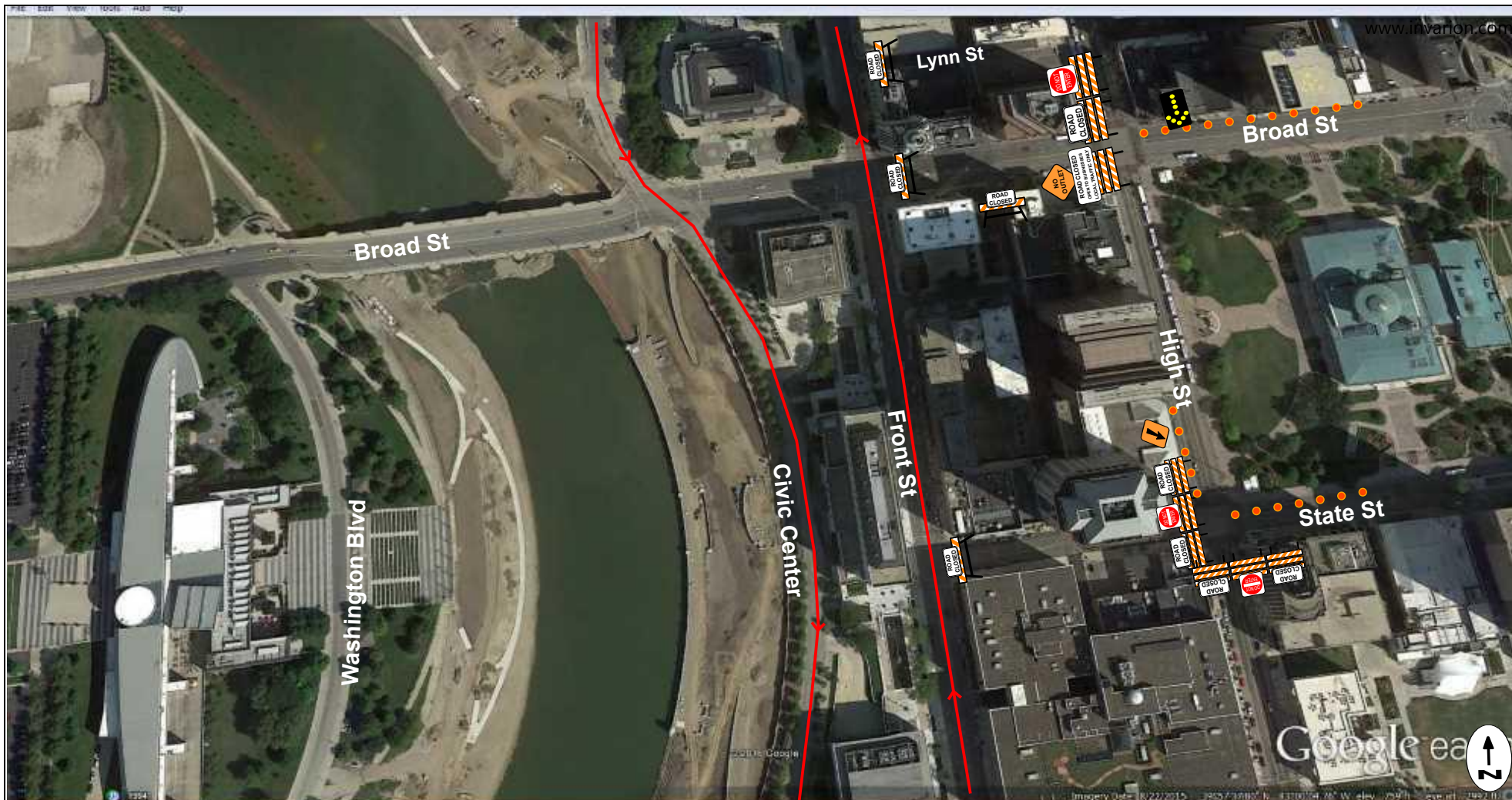
### Devices:

- 8 10' Type III Barricades
- 12 'Road Closed' signs
- 3 'Do Not Enter' signs
- 1 'Road Closed Ahead' signs
- 7 Type I Block Party barricades
- 1 Diagonal Arrow sign (OW-138)
- ~ 20 Cones

### Instructions:

- Close the East bound through lane of Town St at Belle St - 10 cones
- Close the East bound left turn lane of Main St at 2nd St - 10 cones





## Columbus Commons 3-3

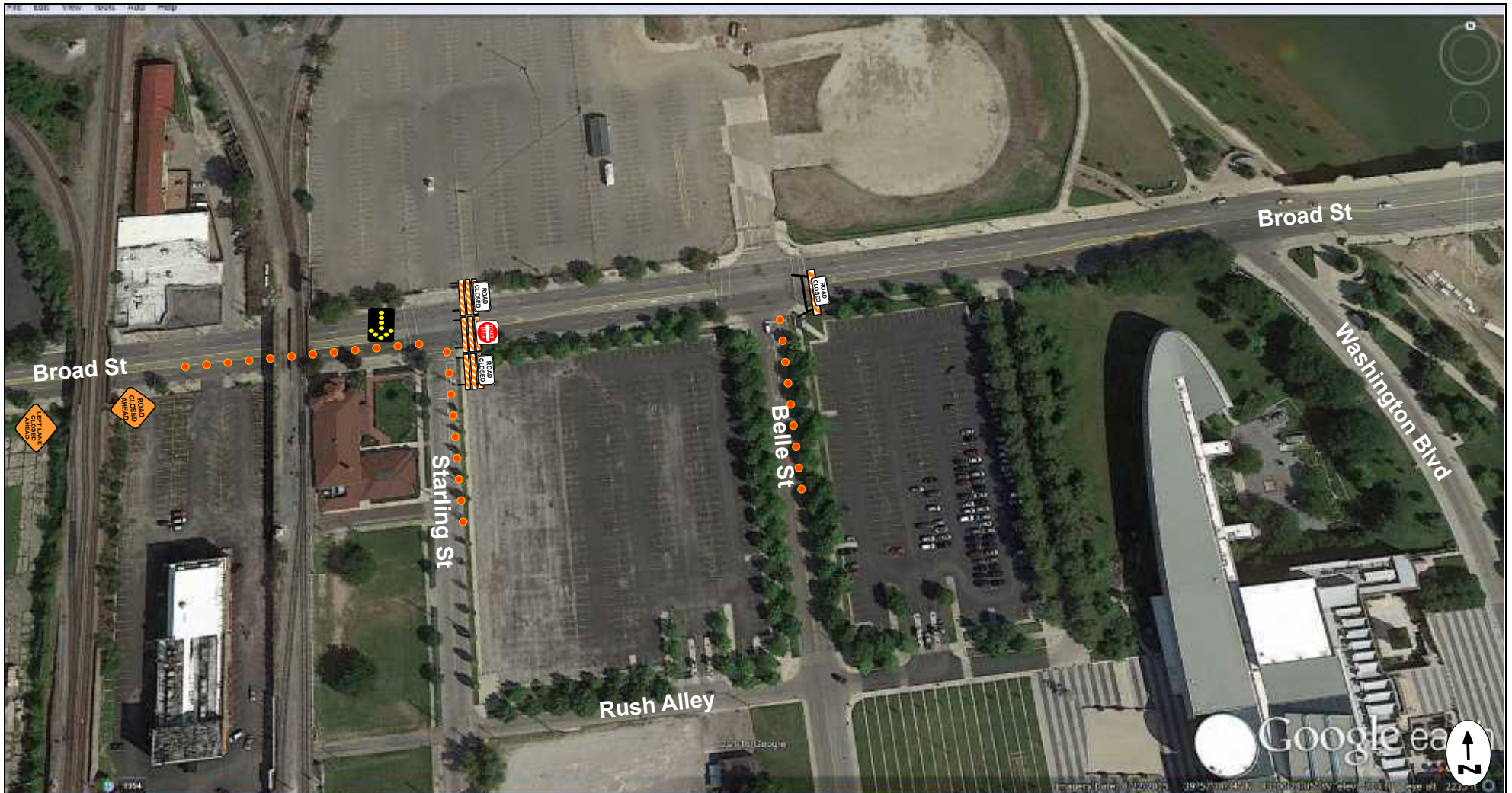
### Devices:

- 9 10' Type III Barricades
- 9 'Road Closed' signs
- 3 'Do Not Enter' signs
- 1 'No Outlet' sign
- 1 'Road Closed, Open to Businesses, Local Traffic Only' sign
- 4 Type I block Party Barricades
- 1 Flashing Arrow Panel
- 1 Diagonal Arrow sign (OW-138)
- ~ 50 Cones

### Instructions:

- Close the West bound left turn lane of State St at High St - 10 cones
- Close the West bound curb lane of Broad St between 3rd and High - 20 cones
- Close South Bound curb lane of High St @ State St ~ 20 cones





## Columbus Commons 3-4

### Devices:

- 3 10' Type III Barricades
- 1 Type I Block Party barricades
- 3 'Road Closed' signs
- 1 'Do Not Enter' signs
- 1 'Left Lane Closed Ahead' sign
- 1 'Road Closed Ahead' sign
- 1 Flashing Arrow Panel
- ~ 50 Cones

### Instructions:

- Close the East bound Left lane of Broad St between the railroad and Starling - 20 cones
- Close the North bound right turn lane of Starling at Broad St - 15 cones
- Close the North bound right turn lane of Belle at Broad St - 15 cones





## Columbus Commons 3-5

### Devices:

- 8 10' Type III Barricades
- 2 6' Type III Barricades
- 7 Type I Block Party barricades
- 12 'Road Closed' signs
- 3 'Do Not Enter' signs
- 1 Diagonal arrow sign (OW-138)
- 2 'No Outlet' signs
- 2 'Road Close Ahead, Local Traffic Only' signs
- 1 'Open to Garage' sign
- 1 Flashing Arrow Panel
- ~ 20 cones

### Instructions:

Close the West bound curb lane and bike lane of Spring St between 3rd and High - 20 cones





#### Devices:

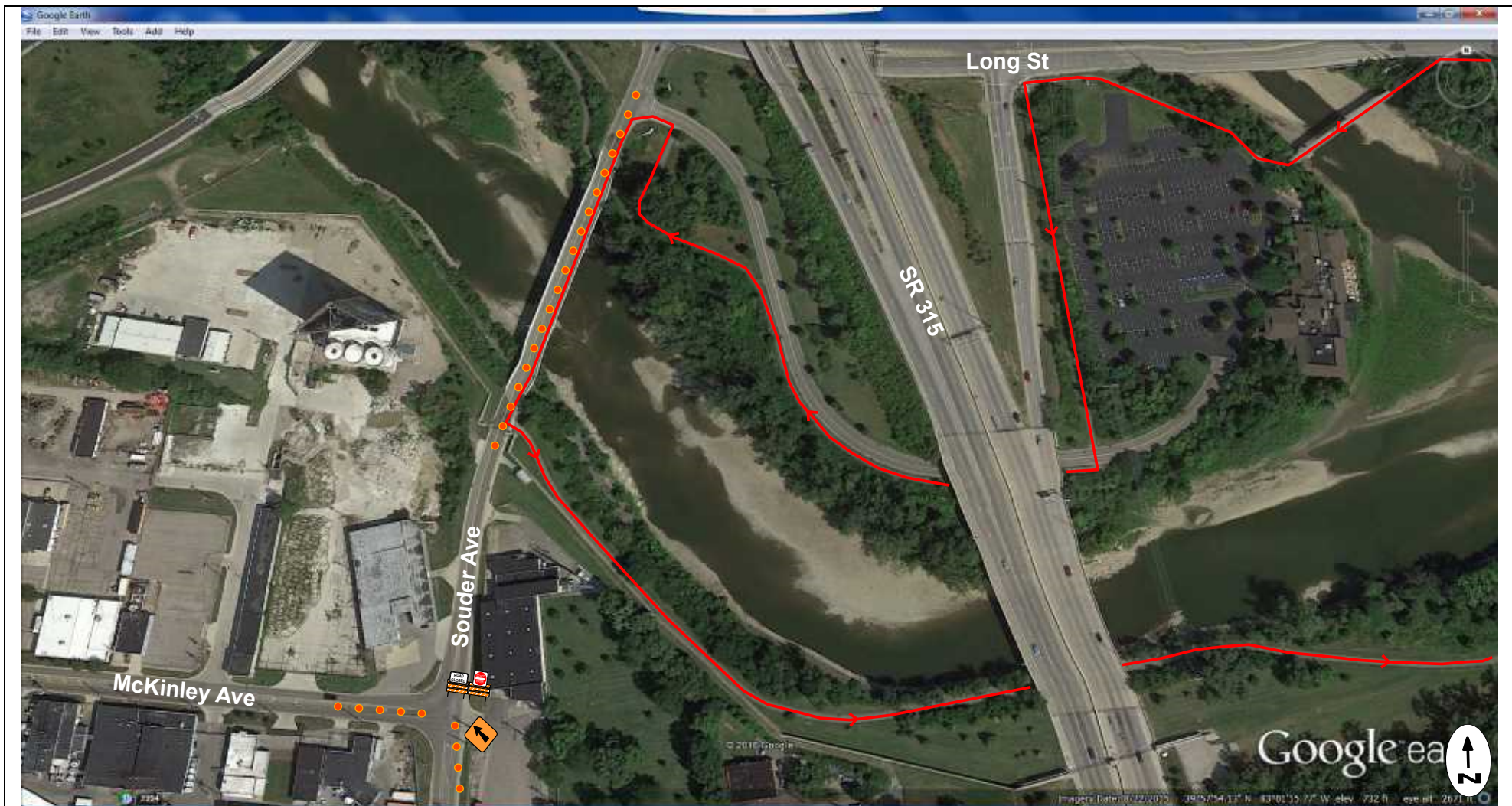
- 3 10' Type III Barricades
- 3 6' Type III Barricades
- 7 Type I Block Party barricades
- 9 'Road Closed' signs
- 1 'Do Not Enter' signs
- 2 'Road Closed Ahead, Local Traffic Only' signs
- 2 'No Outlet' Signs
- 1 'Open to garage, Residences, Businesses' sign
- 3 Diagonal arrow sign (OW-138)
- 2 Flashing Arrow Panel
- 1 One Way sign
- 1 'Keep Right' sign
- ~ 170 Cones

## Columbus Commons 3-6

#### Instructions:

- Close the 2 East bound lanes of Long St between 315 and Hocking - 100 cones
- Close the South bound curb lane of Neil Av between Brodbelt and Nationwide - 20 cones
- Close the inside (left) Southbound left turn lane of Neil between Brodbelt and Nationwide - 20 cones
- Run fencing or bike racks down the center line of McConnell from Nationwide to New Public
- 42" Grabber cones may be substituted for smaller cones. Please consult with City to determine method.
- Run cones in a radius at Neil and Spring to direct any traffic to the alley along side Northbank Condos. ~ 20 cones
- Close the West bound Left turn lane on Nationwide @ Neil ~10 cones
- If there are too many participants to safely use park property only between West and McConnell then a right lane closure will be needed on Nationwide Blvd. This would include 30 cones, a Flashing Arrow Panel, and a 'Right Lane Closed Ahead' sign.





## Columbus Commons 3-7

### Devices:

- 2 10' Type III Barricades
- 1 'Road Closed' signs
- 1 'Do Not Enter' signs
- ~ 50 28" Cones with reflectors

### Instructions:

- Set cones on center double yellow line from park entrance to path - 30 Cones
- Close North bound Souder through lane @ McKinley - 10 Cones
- Close East bound McKinley Ave left turn lane @ Souder - 10 Cones