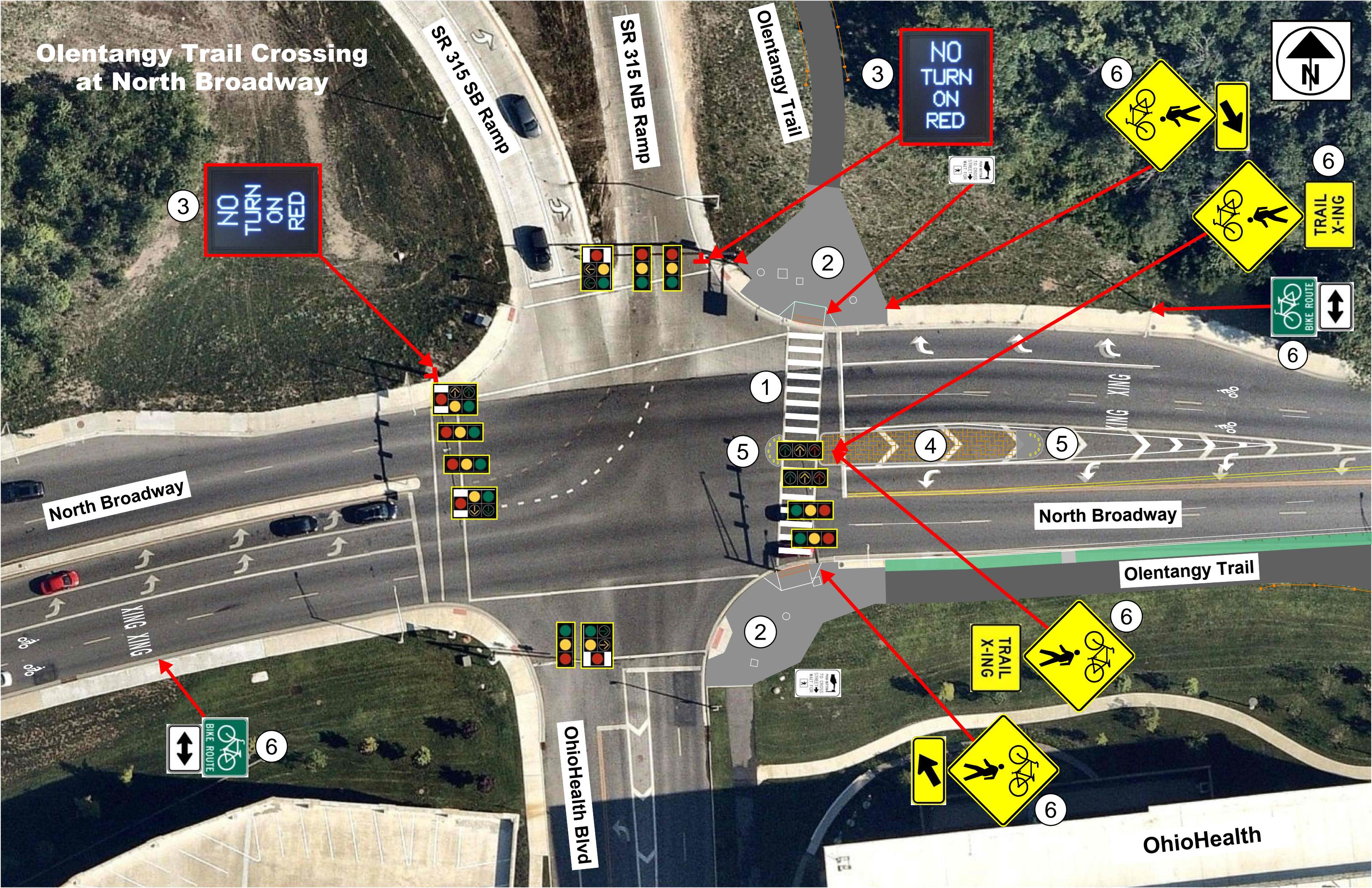


# Olentangy Trail Crossing at North Broadway



NO TURN ON RED

NO TURN ON RED

3

3

6

6

6

6

1

5

4

5

6

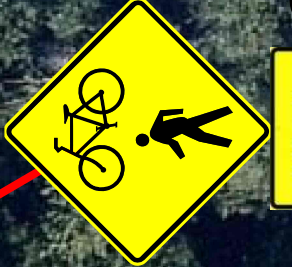
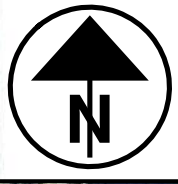
6

6

BIKE ROUTE

↑ ↓

TRAIL X-ING



TRAIL X-ING



SR 315 SB Ramp

SR 315 NB Ramp

Olentangy Trail

North Broadway

North Broadway

Olentangy Trail

OhioHealth Blvd

OhioHealth

## **Olentangy Trail - Final Gap**

<https://www.columbus.gov/recreationandparks/trails/Olentangy-Trail/>

### **North Broadway Crossing Safety Enhancement Summary**

Because of the anticipated high volume of pedestrians and cyclists crossing North Broadway when this section of the Olentangy Trail is completed, the following safety improvements are being installed as part of the project:

- ① High visibility ladder-style pavement markings on the east leg of the intersection where the trail crosses North Broadway.
- ② Plaza "queueing areas" on the north and south side of North Broadway to provide adequate space for trail users waiting for the crossing signal.
- ③ High visibility, oversized LED "No Turn On Red" signs that are activated during the crossing phase when trail users press the pedestrian crossing button. These signs will add a significant increase in visibility.
- ④ Raised concrete median constructed within the existing striped area separating the westbound through lanes from the westbound left turn lane to slow traffic on North Broadway approaching the intersection.
- ⑤ Reboundable plastic pylons on the raised concrete median to further identify the crossing as a high pedestrian area.
- ⑥ Enhanced signage in the eastbound and westbound direction, including yellow "Trail Crossing" signs.