

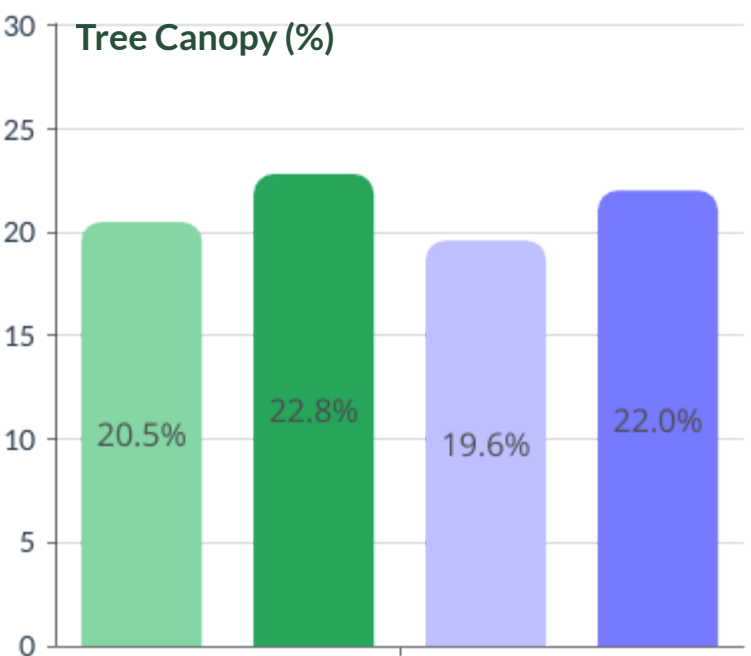
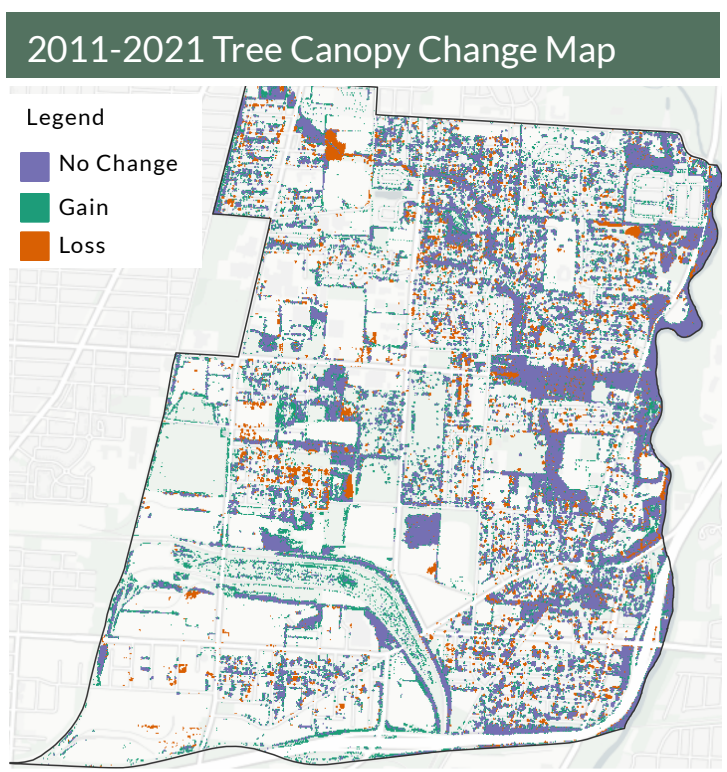
North Central 2011-2021 Tree Canopy Summary

Community & City Overview

The North Central community has an estimated population of 10,218 residents and encompasses an area of 3.8 square miles. In the North Central community, 22.8% of land is covered by tree canopy compared to 22.0% of land in the City of Columbus.

Trees provide essential ecosystem services. Franklin County's trees save \$10 million by absorbing stormwater, \$8 million by storing carbon, and \$15 million of avoided healthcare costs from air pollution¹.

<p>North Central 89,600 Estimated total trees</p> <p>+55 Acres Area change in tree canopy from new plantings & incremental growth (133.4 acres of gain - 78.4 acres of loss).</p> <p>+2.3% Change in tree canopy area</p>	<p>Columbus 4.8 Million Estimated total trees</p> <p>+3,353 Acres Area change in tree canopy from new plantings & incremental growth (7,871 acres of gain - 4,518 acres of loss).</p> <p>+2.4% Change in tree canopy area</p>
---	---



Key Terms

Tree canopy is defined as the layer of leaves, branches, and stems that provide tree coverage of the ground when viewed from above.

- Existing Tree Canopy** - The amount of tree canopy present when viewed from above using aerial or satellite imagery.
- Possible Tree Canopy - Vegetated**: Grass or shrub area that is theoretically available for the establishment of tree canopy.
- Change in Tree Canopy** - the percentage point change between the two time periods.

- North Central 2011
- North Central 2021
- City of Columbus 2011
- City of Columbus 2021

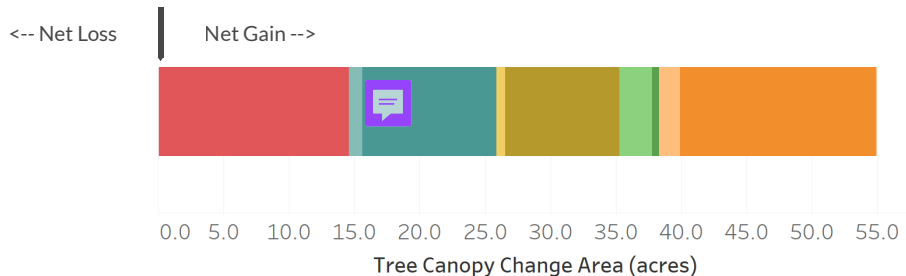
¹Ecosystem services calculations are based on the iTree Eco methodology and values for Franklin County. Nowak, D.J., 2021. Understanding i-Tree: 2021 summary of programs and methods. US Department of Agriculture, Forest Service, Northern Research Station.

North Central 2011-2021 Tree Canopy Summary

Canopy Change by Land Use

The North Central community gained the most canopy on Industrial land use and had a net gain in canopy across all types of land use.

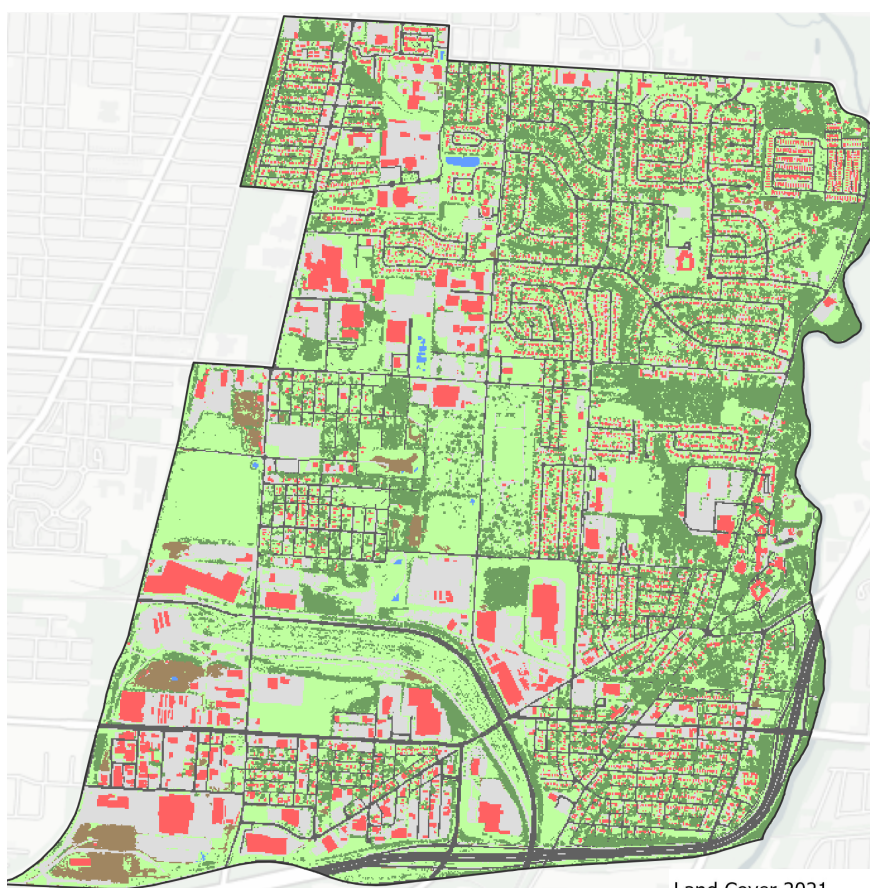
- Industrial
- Mixed Use
- Municipal
- Parks and Open Space
- ROW
- Rural Residential
- Suburban Residential
- Urban Residential
- Vacant and Other



Possible Tree Canopy

In the North Central, 36% of land could be planted with additional trees, compared to 37% in the City of Columbus. Tree canopy is one of seven classifications from the the high-resolution land cover map (right) that forms the foundation of this project. In this assessment, any areas with no trees, buildings, roads, or bodies of water are considered Possible Tree Canopy and represent locations in which trees could theoretically be established without having to remove paved surfaces.

2021 Land Cover Map



- Land Cover 2021
- Tree Canopy
 - Grass/Shrub
 - Bare Soil
 - Water
 - Buildings
 - Roads/Railroads
 - Other Paved

Environmental Equity

1. **Tree Canopy:** The extent of canopy cover in the North Central is 22.8% of its total land area while it is 22.0% for the City of Columbus.
 2. **Temperature:** The average high in °F for the North Central is 97 (max. 101), and 96 (max. 107) for the City of Columbus. Combining this information with tree canopy values allows us to understand the role trees could play in reducing heat islands.
 3. **Asthma Rate:** Average asthma rates per 1,000 residents in the North Central are 12.98 while this value is 10.48 for the City of Columbus. Combining this information with tree canopy values allows us to understand the role trees could play in removing pollutants from the air.
- **Income:** The North Central has a median household income of \$31,475, while the City of Columbus has one of \$45,675. Combining this information with tree canopy values allows us to understand the role trees could play in promoting equity for socio-economically vulnerable groups.

Recommendations



Preserving existing tree canopy is the most effective means for securing future tree canopy, as loss is an event but gain is a process.



Plant new trees in areas where tree canopy is low or in locations where there has been tree canopy removed to help grow canopy.



Refer to the full Tree Canopy Assessment and corresponding geographic data available by the City of Columbus and its communities to help manage trees.