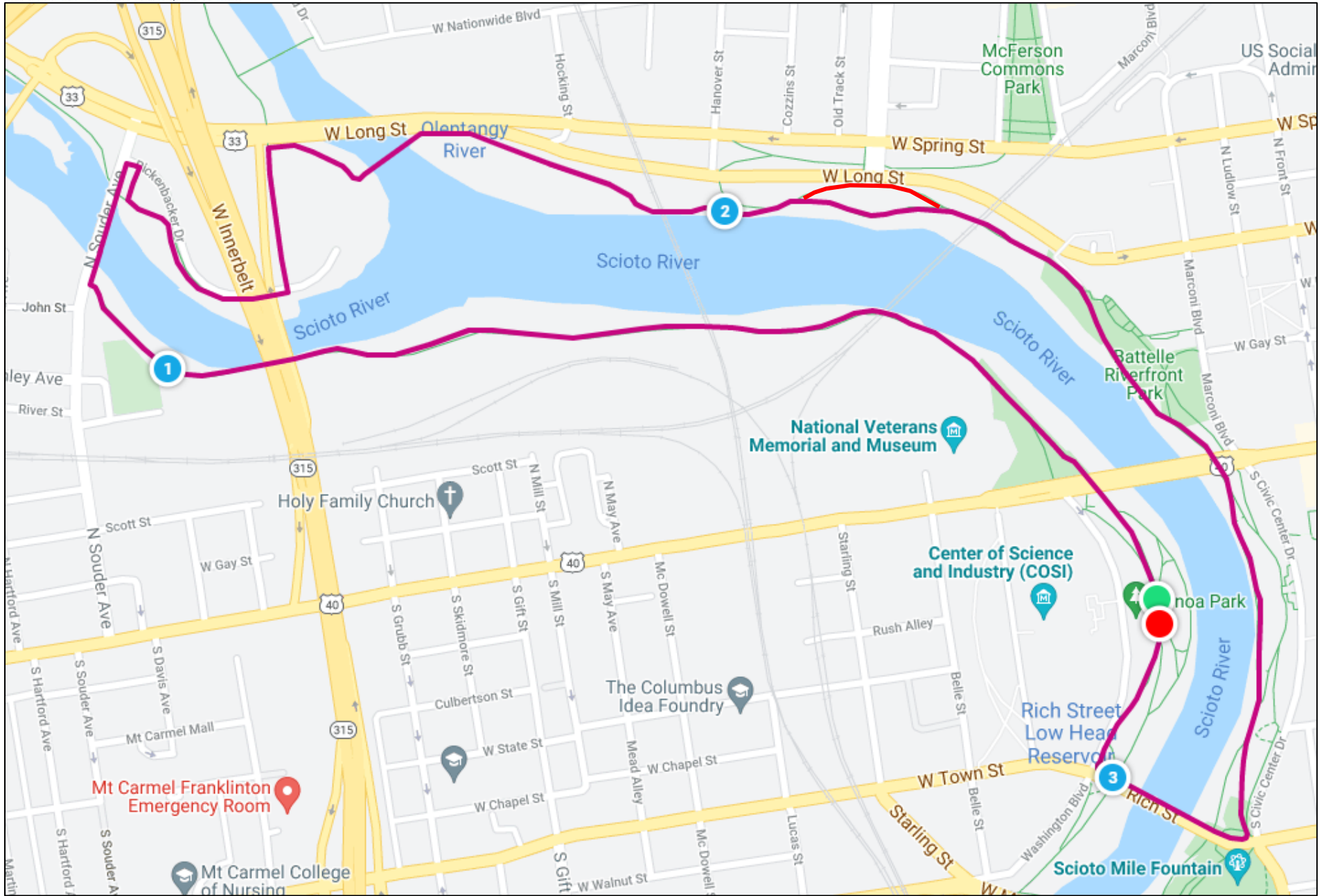


Genoa Park 3

3.1 Miles



Course Capacity: 1,000

Genoa Park 3

Start at the amphitheater of Genoa Park and head north on the bike path

Exit the bike path at Souder Ave and turn right (north) across pedestrian bridge over river

Turn right (east) on Rickenbacker Dr and immediately turn left (south) to re-enter bike

path Exit bike path at Rich St and Civic Center Dr

Turn right (west) onto the sidewalk of Rich St

Turn right (north) on Washington Blvd

Follow ramp down to the lower level of Genoa Park

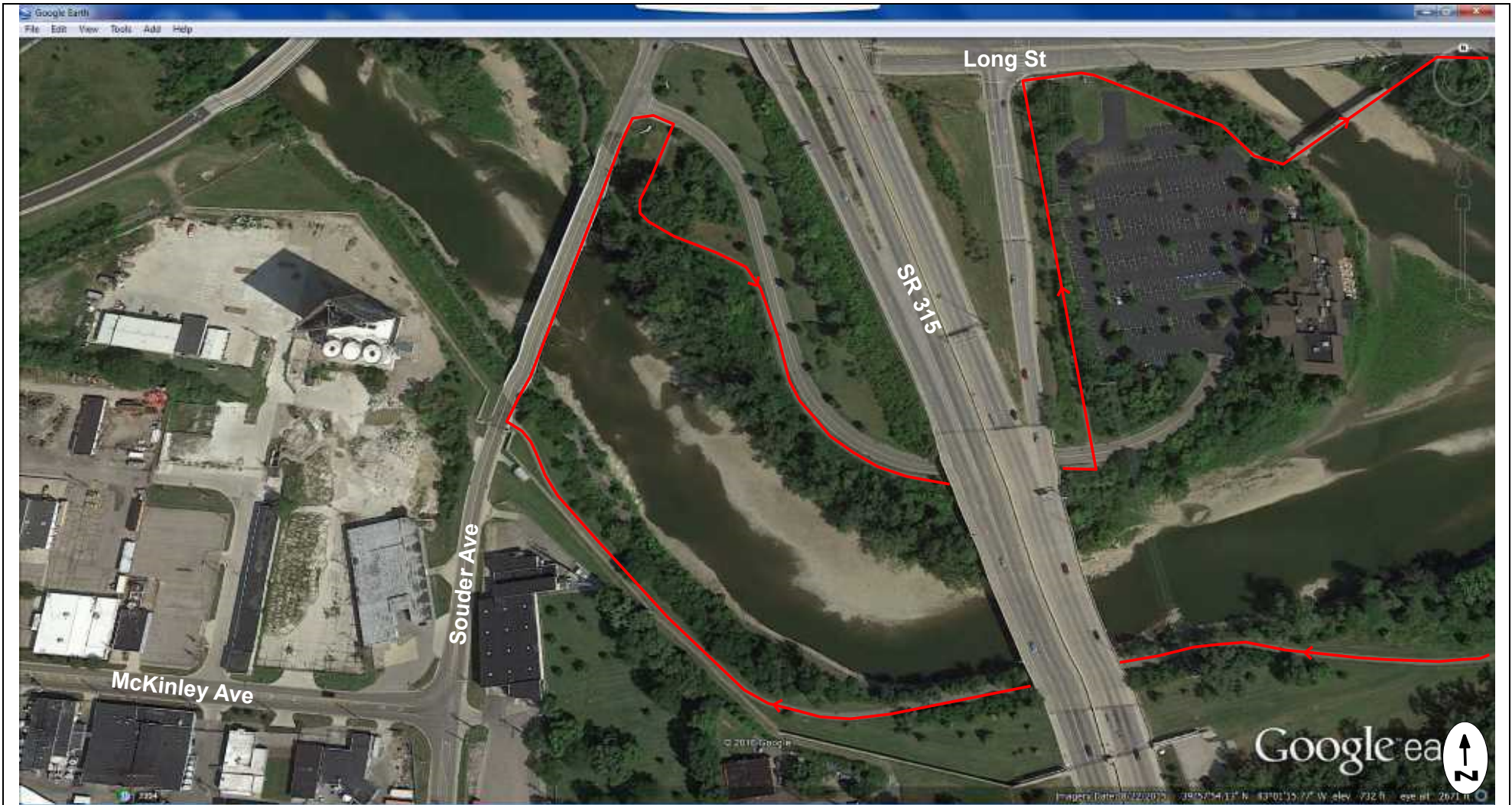


Genoa Park 3-1

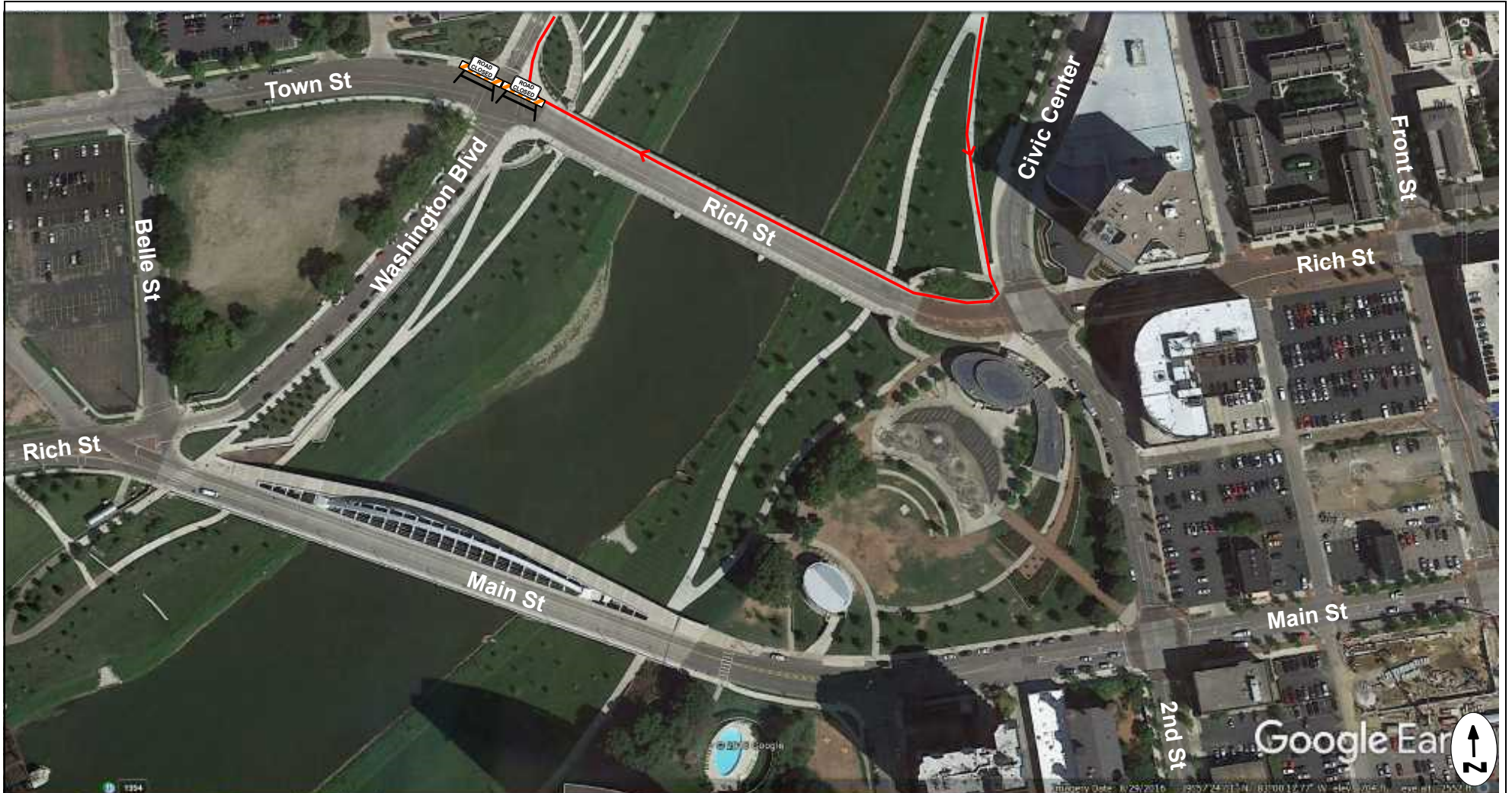
Devices:

- 3 10' Type III Barricades
- 2 'Road Closed' signs
- 1 'Do Not Enter' signs

Instructions:



Genoa Park 3-2



Genoa Park 3-3

Devices:

- 2 'Road Closed' signs
- 2 Type I Block Party Barricades

Instructions: