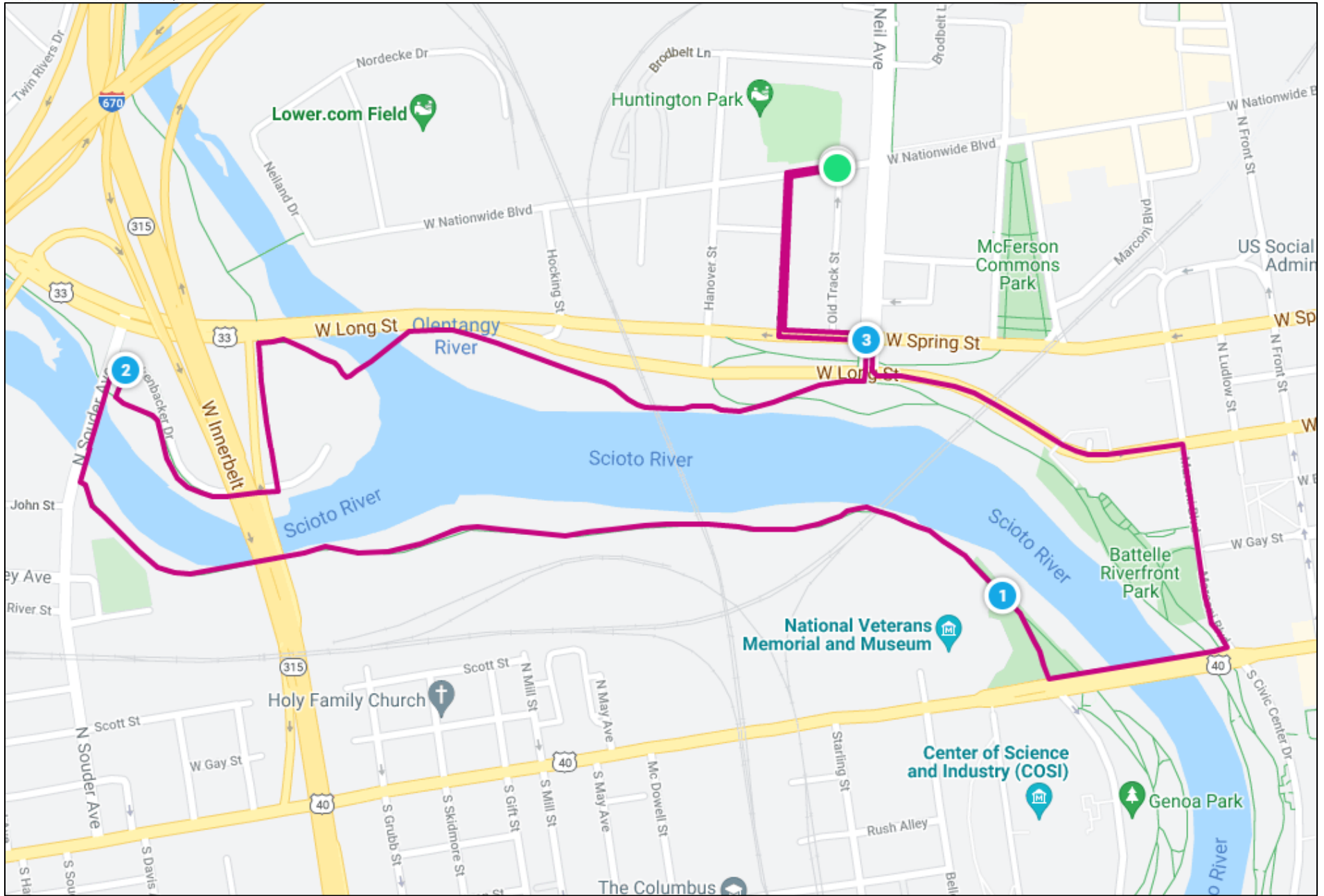


# Huntington Park 2

3.2 Miles



Course Capacity: 1,000

# Huntington Park 2

Start at Huntington Park and Exit to Nationwide Blvd

Head west on Nationwide Blvd

Turn left (south) on Cozzins St

Turn left (east) on Spring St

Turn right (south) on Neil Ave

Turn left (east) on Long St

Turn right (south) on Marconi Blvd

Turn right (west) on the Broad St Bridge sidewalk

Turn right (north) to enter to bike path

Exit the bike path at Souder Ave and turn right (north) across the pedestrian bridge over river

Turn right (east) on Rickenbacker Dr and immediately turn left (south) to re-enter bike path

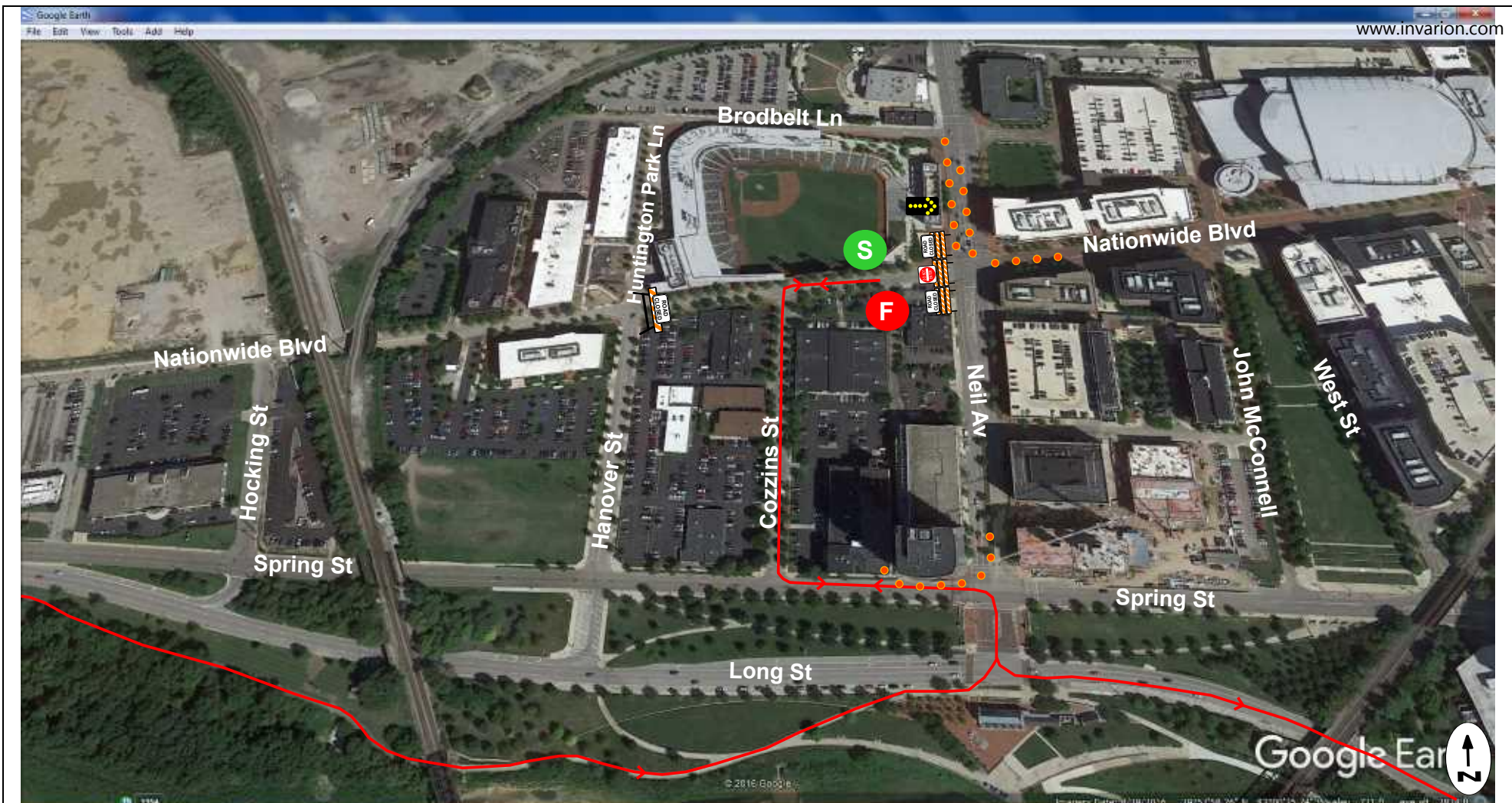
Exit the bike path at North Bank Park

Continue north on Neil

Turn left (west) on Spring St

Turn right (north) on Cozzins St

Turn right (east) on Nationwide Blvd and return to Huntington Park



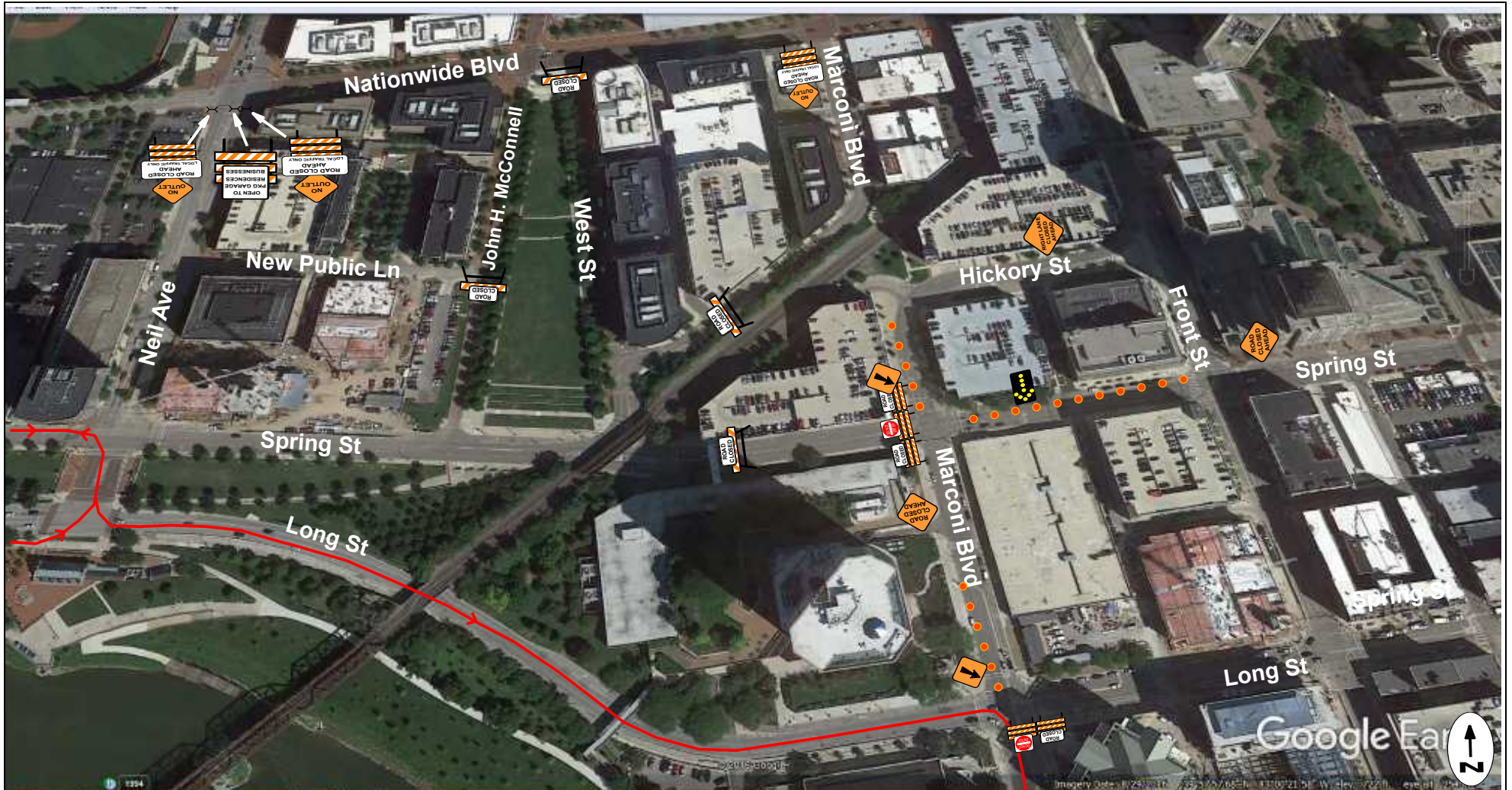
## Huntington Park 2-1

### Devices:

- 3 10' Type III barricades
- 1 Type I Block Party Barricade
- 3 'Road Closed' sign
- 1 'Do Not Enter' sign
- 1 Flashing Arrow Panel
- ~ 70 Cones

### Instructions:

- Close South bound Curb Lane and East most Left Turn Lane of Neil Ave between Brodbelt and Nationwide - 40 cones
- Run cones in a radius at Neil and Spring to direct any traffic to the alley along side Northbank Condos - 20 cones
- Close the West bound Left turn lane on Nationwide @ Neil - 10 cones



## Huntington Park 2-2

### Devices:

- |                                 |   |
|---------------------------------|---|
| 5 10' Type III Barricades       | 1 'Right Lane Closed Ahead' sign                    |
| 4 6' Type III Barricades        | 3 'Road Closed Ahead, Local Traffic Only' sign      |
| 7 'Road Closed' signs           | 1 'Open to Pkg garage, Residences, Businesses' sign |
| 2 'Do Not Enter' signs          | 1 Flashing Arrow Panels                             |
| 4 Type I block Party Barricades | 2 Diagonal Arrow (OW-138) signs                     |
| 2 'Road Closed Ahead' Signs     | ~ 55 Cones  |
| 3 'No Outlet' signs             |   |

### Instructions:

- Close the East bound curb lane of Spring St from Front St to Marconi Blvd - 25 Cones
- Close the 2 South bound right turn lanes of Marconi @ Spring - 10 Cones
- Close Southbound curb lane and thru lane of Marconi at Long St - 20 cones



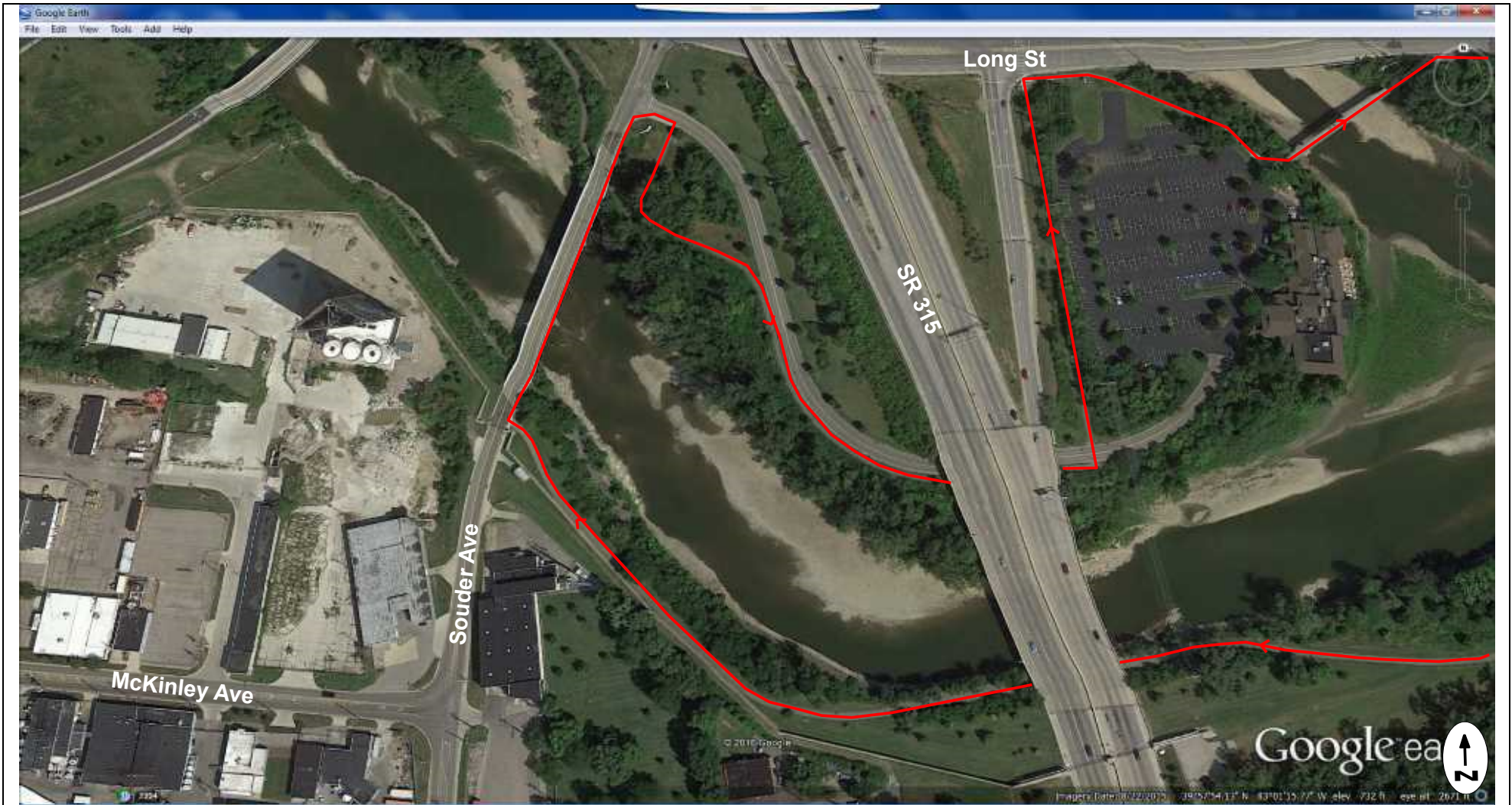
## Huntington Park 2-3

### Devices:

- \* 1 'Right Lane Closed Ahead' sign
- \* 1 Flashing Arrow Panel
- \* ~ 50 28" Cones with reflectors

### Instructions:

- \* If the sidewalk across the Broad St bridge cannot accommodate the participants, a right lane closure of the East bound curb lane of Broad St will be needed. An additional Flashing Arrow Panel and 50 cones will be needed to close the right lane from City Hall, across the bridge, to the path entrance.



**Huntington Park 2-4**



## Huntington Park 2-5

### Devices:

- 3 10' Type III Barricades
- 2 'Road Closed' signs
- 1 'Do Not Enter' signs
- 1 'Road Closed Ahead' Signs
- 1 'Right Lane Closed Ahead' sign
- 1 Flashing Arrow Panels
- 3 Diagonal Arrow (OW-138) signs
- ~ 100 Cones

### Instructions:

Close 2 East bound through lanes of Dublin Rd/Long St between the 315 off ramp, and Hocking St. Force all traffic North on Hocking. - 100 Cones