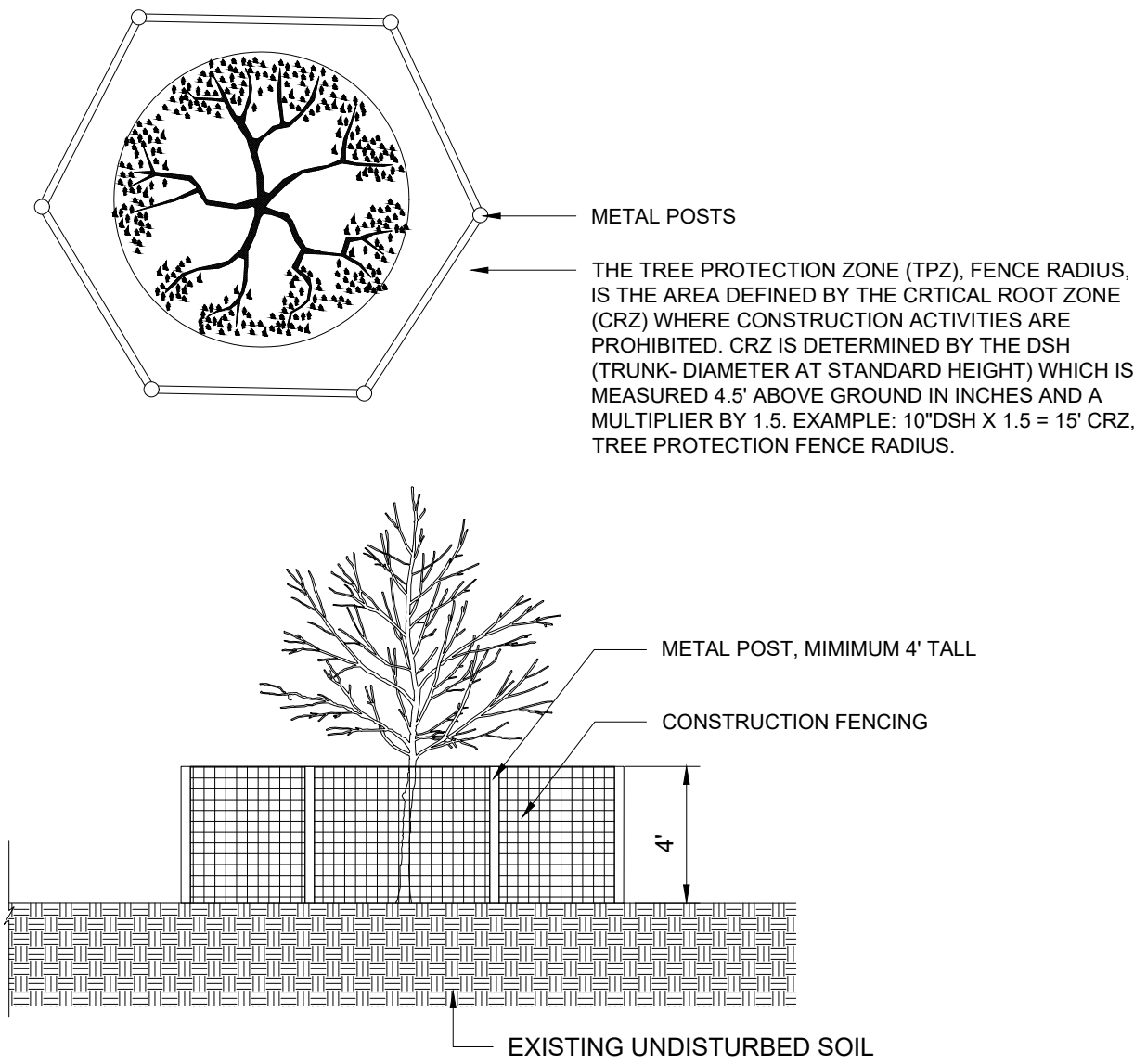


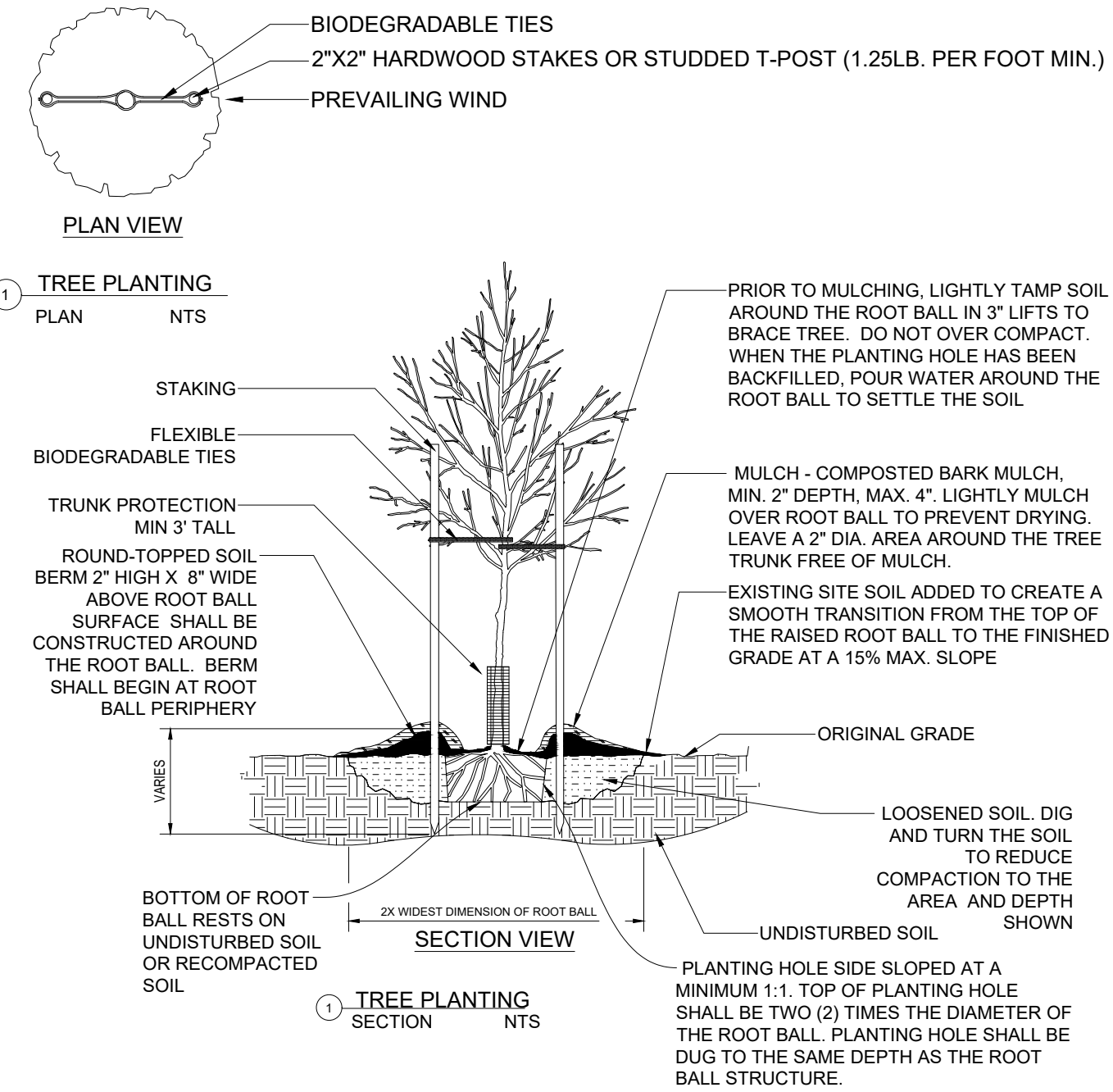
DESIGN PROFESSIONALS GENERAL NOTES IF APPLICABLE

NATURAL RESOURCE PROFESSIONAL CONTACT INFO



GENERAL NOTES:

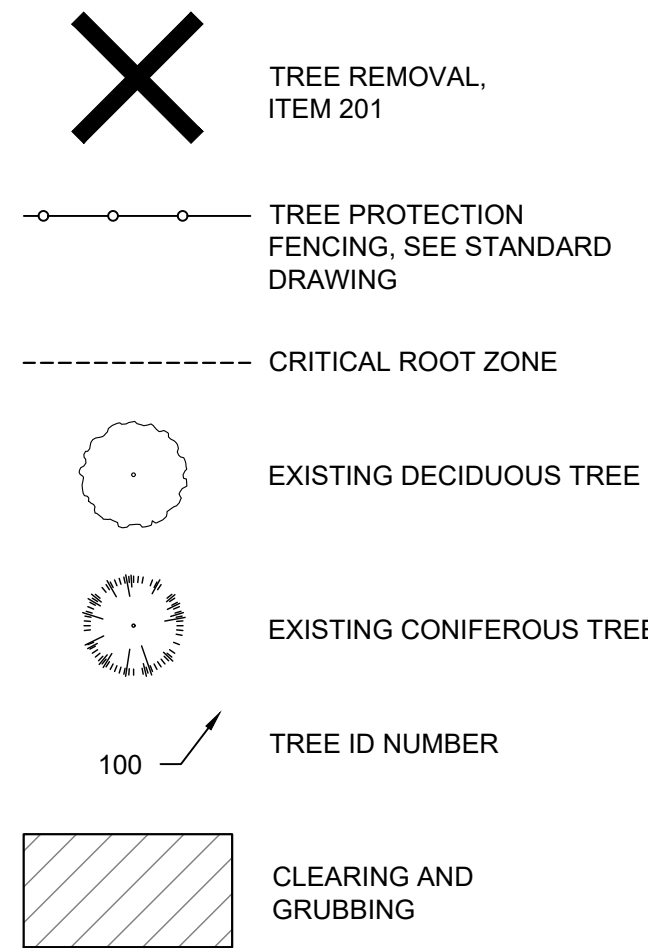
- FOR GROUPS OF TREES PLACE BARRICADES BETWEEN TREES AND CONSTRUCTION ACTIVITY AT THE EDGE OF THE TREES CRITICAL ROOT ZONE.
- TREE PROTECTION IS REQUIRED WHEN CONSTRUCTION ACTIVITY ENCLOSES THE CRITICAL ROOT ZONE OF A TREE.
- SEE COLUMBUS TREE TECHNICAL MANUAL FOR ADDITIONAL TREE PROTECTION REQUIREMENTS.



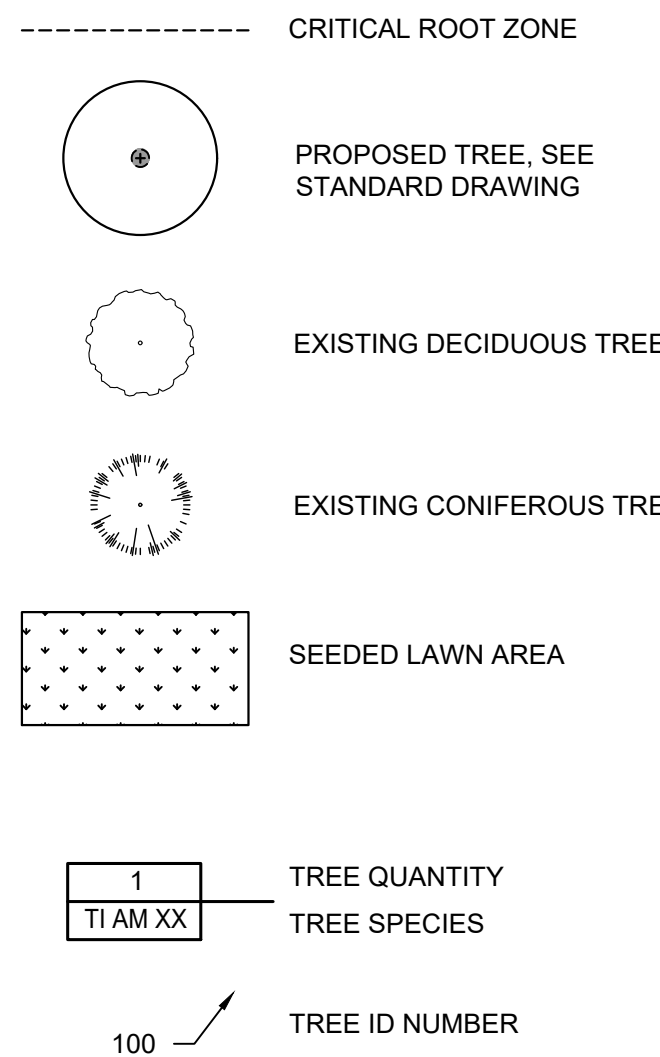
BARE ROOT OR CONTAINER OPEN AREAS

1 TREE PROTECTION

TREE PROTECTION AND REMOVAL LEGEND

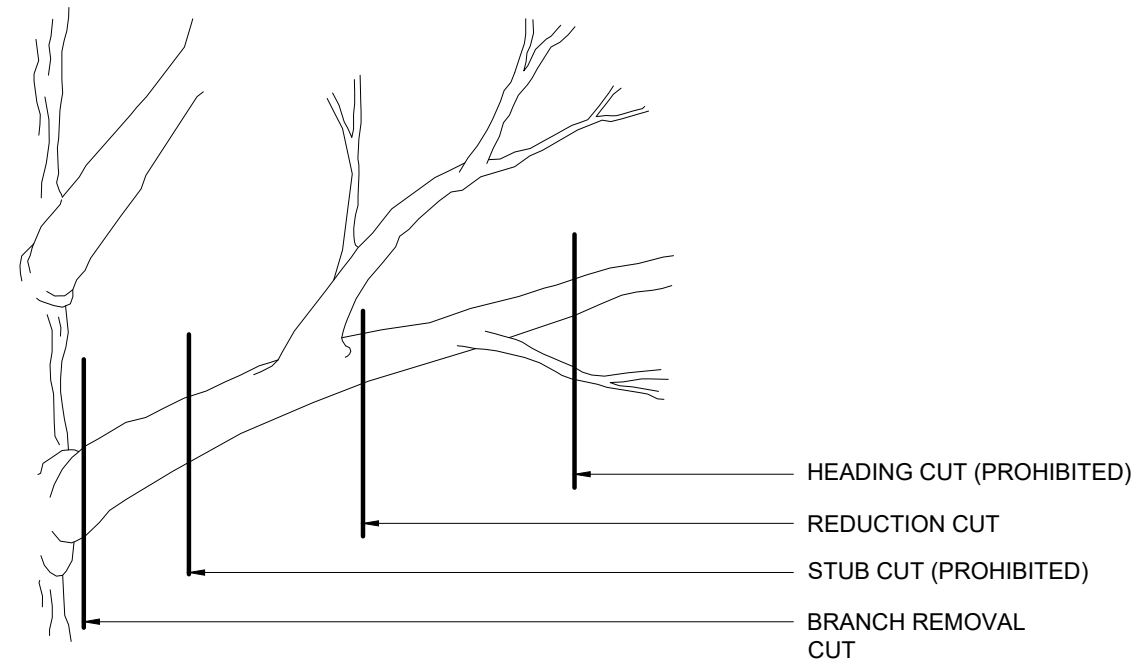
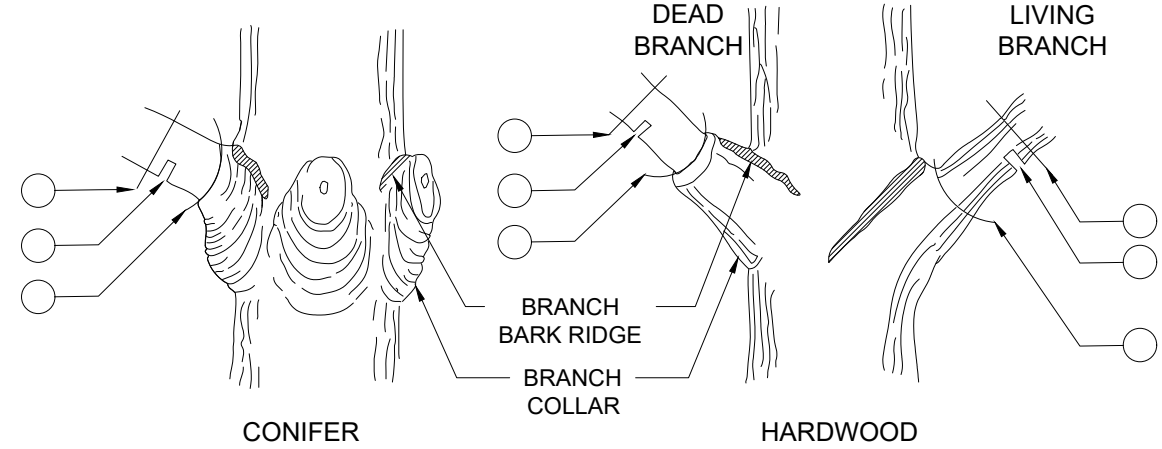


PLANTING LEGEND



2 TREE PLANTING

- FIRST CUT - ENSURES THE LIMB DOES NOT TEAR DOWN INTO THE TRUNK BARK WHEN REMOVED
- SECOND CUT - REMOVES THE MAJORITY OF LIMB WEIGHT
- THIRD CUT - ACHIEVES THE FINAL FINISHED CUT THAT CAN MOST EASILY HEAL OVER THE COMING MONTHS.



CUT TYPES

3 TREE PRUNING TECHNIQUE

PUBLIC TREE IMPACT NOTE

ANY WORK ON OR WITHIN THE CRITICAL ROOT ZONE OF A PUBLIC TREE IS CONSIDERED AN IMPACT TO THE PUBLIC TREE. A PUBLIC TREE PLAN AND PERMIT FROM COLUMBUS RECREATION & PARKS FORESTRY IS REQUIRED FOR ANY PLAN WITH PUBLIC TREES IN THE WORK LIMITS. THE PUBLIC TREE PLAN SHALL DENOTE ALL PUBLIC TREES IN THE PROJECT'S WORK LIMITS. TREE INFORMATION SHALL CONFORM TO THE COLUMBUS TREE TECHNICAL MANUAL REQUIREMENTS AND BE PROVIDED BY A NATURAL RESOURCE PROFESSIONAL. FAILURE TO CONTACT THE CITY FORESTRY REPRESENTATIVE IN ADVANCE OF CONSTRUCTION WILL RESULT IN THE CONTRACTOR REIMBURSING FORESTRY FOR THE COST OF ANY AND ALL DAMAGE TO PUBLIC TREES.

PUBLIC TREE PROTECTION NOTE

ALL PUBLIC TREES AND THE GROUND IN THE CRITICAL ROOT ZONE, WHETHER SHOWN OR NOT SHOWN ON THE PLANS, ARE TO BE PROTECTED UNLESS A PERMIT TO REMOVE IS GIVEN BY COLUMBUS RECREATION & PARKS (CRPD) FORESTRY. THE CONTRACTOR SHALL PROTECT TREES NEAR OR ADJACENT TO THE WORK AREA TO AVOID DAMAGE TO ALL TREES THAT ARE TO REMAIN. HEAVY EQUIPMENT WILL NOT BE ALLOWED TO COMPACT THE SOIL OVER THE CRITICAL ROOT ZONE OF EXISTING PUBLIC TREES. RESTRICTED EQUIPMENT ACCESS ROUTES SHALL BE COORDINATED WITH CRPD FORESTRY AT FORESTRY@COLUMBUS.GOV BEFORE WORK BEGINS. TEMPORARY PAVING MATERIALS, SUCH AS PLYWOOD LUMBER OR RUBBER MATTING, SPREAD OVER THE ROOT ZONE OF PUBLIC TREES MAY BE REQUIRED TO PREVENT COMPACTION. CONSTRUCTION MATERIALS, EXCAVATION DEBRIS, FUEL, EQUIPMENT, OR VEHICLES ARE NOT TO BE STOCKPILED, STORED, DUMPED, OR PARKED WITHIN THE CRITICAL ROOT ZONE OF PUBLIC TREES. ALL TREES MUST BE PROTECTED AGAINST INJURY OR DAMAGE TO BRANCHES, TRUNKS OR ROOTS FROM CONSTRUCTION AND EXCAVATION, AS DESCRIBED IN THE CRPD TREE TECHNICAL MANUAL. IF THERE IS A QUESTION REGARDING TREE PROTECTION NEEDS, THE CONTRACTOR MUST CONTACT THE CITY FORESTRY SECTION AT FORESTRY@COLUMBUS.GOV.

FORESTRY PERMIT NOTE

ANY WORK ON OR WITHIN THE CRITICAL ROOT ZONE OF A PUBLIC TREE REQUIRES A FORESTRY PERMIT. ALL APPLICABLE FEES MUST BE PAID PRIOR TO PERMIT ISSUANCE. REFER TO THE CRPD TREE TECHNICAL MANUAL FOR TREE REMOVAL, PRUNING, PROTECTION, AND MITIGATION STANDARDS.

OAK WILT NOTE

TO PREVENT THE SPREAD OF OAK WILT, A FUNGAL DISEASE, OAK TREE SHALL ONLY BE PRUNED FROM NOVEMBER 1 TO MARCH 1.

GREENWAY TRAIL NOTE

ALL ACTIVITIES THAT MAY BE ADJACENT TO, MAY POTENTIALLY DISTURB A COLUMBUS RECREATION & PARKS DEPARTMENT (CRPD) TRAIL, AND/OR HAVE ANY IMPACTS TO NORMAL TRAIL FLOW REQUIRE COORDINATION WITH CRPD'S NON PARK USE PROGRAM AT CRPD.NPUP@COLUMBUS.GOV. ACCESS OR USE OF GREENWAY TRAILS FOR ANY NON- PARK USE IS NOT GRANTED OR IMPLIED UNLESS A NON PARK USE APPLICATION HAS BEEN SUBMITTED, APPROVED, AND HAS A PERMIT ISSUED. ONCE APPROVED, THE CONTRACTOR SHALL CONTACT THE NPUP POINT OF CONTACT THIRTY (30) CALENDAR DAYS PRIOR TO ANY WORK COMMENCING FOR ONSITE COORDINATION, ONSITE MEETING, SIGNAGE, TRAFFIC CONTROL DETOUR PLAN, RESTORATION PLAN, DISTURBANCE AND/OR CLEARING LIMIT REVIEW. THE CONTRACTOR SHALL SUBMIT A VEHICLE/EQUIPMENT TRAFFIC PLAN INCLUDING IDENTIFICATION NUMBERS, TYPE OF VEHICLE/EQUIPMENT, AND WEIGHT OF VEHICLE/EQUIPMENT TO BE USED PRIOR TO THE START OF WORK. ONLY VEHICLES/EQUIPMENT APPROVED BY CRPD IN WRITING SHALL BE PERMITTED ON THE TRAIL. ADDITIONALLY, EXISTING TRAIL CONDITIONS MUST BE DOCUMENTED THROUGH PICTURES OR VIDEO BEFORE WORK BEGINS. IF THE TRAIL IS DAMAGED BY CONTRACTOR USE, THE CONTRACTOR MUST REPAIR THE TRAIL BACK TO CONDITIONS THAT MEET OR EXCEED EXISTING CONDITIONS.

COLUMBUS RECREATION AND PARKS DEPARTMENT STANDARD PLAN NOTE

PRIOR TO SUBMISSION OF FINAL SITE COMPLIANCE PLAN, ANY ENTITY REQUESTIN NON-PARK USE/DEVELOPMENT MUST REQUEST A NON-PARK USE OF PARKLAND (NPUP) APPLICATION FROM COLUMBUS RECREATION & PARKS DEPARTMENT (CRPD) AT CRPD_NPUP@COLUMBUS.GOV. IF THE NPUP IS APPROVED, CRPD WILL ISSUE A PERMIT TO ENTER THE CRPD PROPERTY. THE NPUP APPLICATION MUST BE REVIED AND APPROVED WITH THE PERMIT ISSUED BEFORE ANY ACTIVITY CAN BE PERFORMED ON PARKLAND. THE CONTRACTOR SHALL SUBMIT A WORK SCHEDULE AND COORDINATE ACCESS WITH CRPD INSPECTOR PRIOR TO ANY WORK ON OR NEAT CRPD PROPOERTY. SCHEDULED EVENTS BY CRPD SHALL TAKE PRECEDENCE OVER THE CONTRACTORS WORK SCHEDULE, AND THE CONTRACTOR SHALL ADJUST WORK SCHEDLE AS NECESSARY TO ACCOMODATE CRPD EVENTS. THE CONTRACTOR SHALL NOT ENTER INTO A CRPD PROPERTY NOR STAGE/STORE ANY MATERIALS/EQUIPMENT OUTSIDE THEIR WORK LIMITS ON CRPD PROPOERTY WITHOUT A PERMIT ISSUED BY CRPD. THE PERMIT MUST BE POSTED ONSITE AT ALL TIMES. ANY AND ALL CRPD PARK AREAS DISTURBED BY THE CONTRACTOR DURING THE COURSE OF THEIR WORK ACTIVITIES SHALL BE RESTORED TO CONDITIONS THAT MEET OR EXCEED EXISTING CONDITIONS WITHIN THE TIME FRAMES NOTED IN THE APPROVED SCHEDULE AND SHALL BE TO THE SATISFACTION OF CRPD THAT MEET STATNDASRDS AND SPECIFICATIONS. UNLESS SPECIFIC PERMISSIONS ARE GRANTED BY CRPD, ACCESS TO, FROM, ON OVER, UNDER, THROUGH, OR ACROSS CRPD PROPERTY IS NOT GRANTED OR IMPLIED. FAILURE TO HAVE A PERMIT IN PLACE THAT IS CONSISTENT WITH CRPD NPUP POLICY WILL RESULT IN DELAY OF FINAL SITE COMPLIANCE APPROVAL SIGNATURE BY RECREATION & PARKS/CITY FORESTER.

PUBLIC TREE REMOVAL AND MITIGATION NOTE

NO PUBLIC TREE REMOVAL SHALL BE ATTEMPTED BY CONSTRUCTION PERSONNEL OR EQUIPMENT, ONLY UNDER THE SUPERVISION OF A CERTIFIED ARBORIST. ALL TREES REMOVED SHALL INCLUDE STUMP REMOVAL GROUND TO 18 INCHES; IF THE REMOVED TREE IS WITHIN 36 INCHES OF A PROTECTED TREE THE STUMP SHALL ONLY BE GROUND TO 2 INCHES DEPTH. ALL WOOD DEBRIS ON CITY OF COLUMBUS PROPERTY SHALL BE REMOVED AND DISPOSED OF BY THE CONTRACTOR BY THE END OF EACH WORK DAY. TREES APPROVED FOR REMOVAL BY CRPD FORESTRY SHALL BE MITIGATED IN ACCORDANCE WITH THE COLUMBUS TREE TECHNICAL MANUAL AND COLUMBUS CITY CODES CHAPTER 912.

PUBLIC TREE PLAN #

PROJECT OWNER
COLUMBUS RECREATION AND PARKS DEPARTMENT
CITY OF COLUMBUS
COLUMBUS, OH 43206

PROJECT ADDRESS
XXXXX
XXXXXX

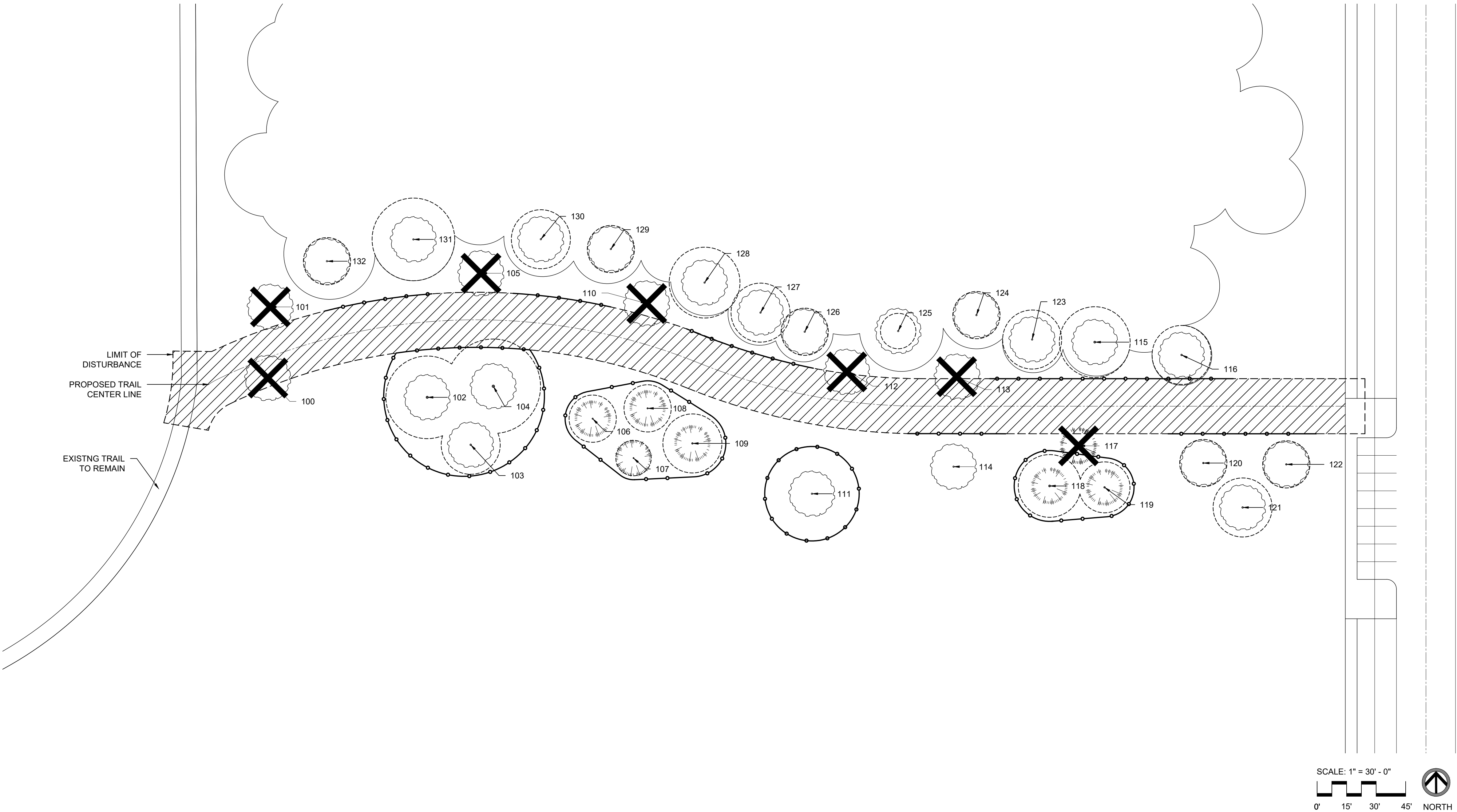
SHEET TITLE
GENERAL NOTES

SHEET NUMBER
G001

TABLE 1 - EXISTING TREE DATA TABLE											
TREE TAG NUMBER	CRPD TREE ID DATABASE NUMBER	BOTANICAL NAME	COMMON NAME	DSH (Diameter at Standard Height)	CONDITION	CRITICAL ROOT ZONE (Radius)	ACTION	MITIGATION REQUIRED (Y/N)	OTHER NOTES (Reason for Removal)	PROTECTION MEASURES	SHEET NUMBER
Protected Trees											
102	#####	Quercus alba	White Oak	14"	GOOD	21'	DO NOT DISTURB	N		CHAIN LINK FENCING	L002
103	#####	Quercus alba	White Oak	10"	GOOD	15'	DO NOT DISTURB	N		CHAIN LINK FENCING	L002
104	#####	Quercus alba	White Oak	16"	POOR	24'	DO NOT DISTURB	N		CHAIN LINK FENCING	L002
106	#####	Pinus strobus	White Pine	8"	GOOD	12'	DO NOT DISTURB	N		CHAIN LINK FENCING	L002
107	#####	Pinus strobus	White Pine	6"	POOR	9'	DO NOT DISTURB	N		CHAIN LINK FENCING	L002
108	#####	Pinus strobus	White Pine	8"	GOOD	12'	DO NOT DISTURB	N		CHAIN LINK FENCING	L002
109	#####	Pinus strobus	White Pine	10"	GOOD	15'	DO NOT DISTURB	N		CHAIN LINK FENCING	L002
111	#####	Quercus alba	White Oak	16"	FAIR	24'	DO NOT DISTURB	N		CHAIN LINK FENCING	L002
114	#####	Quercus rubrum	Red Oak	10"	POOR	15'	DO NOT DISTURB	N		CHAIN LINK FENCING	L002
115	#####	Quercus rubrum	Red Oak	12"	FAIR	18'	DO NOT DISTURB	N		CHAIN LINK FENCING	L002
116	#####	Quercus alba	White Oak	14"	GOOD	21'	DO NOT DISTURB	N		CHAIN LINK FENCING	L002
118	#####	Pinus strobus	White Pine	8"	POOR	12'	DO NOT DISTURB	N		CHAIN LINK FENCING	L002
119	#####	Pinus strobus	White Pine	12"	FAIR	18'	DO NOT DISTURB	N		CHAIN LINK FENCING	L002
120	#####	Acer rubrum	Red Maple	10"	GOOD	15'	DO NOT DISTURB	N		CHAIN LINK FENCING	L002
121	#####	Acer rubrum	Red Maple	8"	POOR	12'	DO NOT DISTURB	N		CHAIN LINK FENCING	L002
122	#####	Acer rubrum	Red Maple	10"	GOOD	15'	DO NOT DISTURB	N		CHAIN LINK FENCING	L002
123	#####	Acer rubrum	Red Maple	8"	GOOD	12'	DO NOT DISTURB	N		SNOW FENCING	L002
124	#####	Ulmus americana	American Elm	8"	GOOD	12'	DO NOT DISTURB	N		SNOW FENCING	L002
125	#####	Ulmus americana	American Elm	6"	GOOD	9'	DO NOT DISTURB	N		SNOW FENCING	L002
126	#####	Acer rubrum	Red Maple	8"	FAIR	12'	DO NOT DISTURB	N		SNOW FENCING	L002
127	#####	Quercus rubrum	Red Oak	10"	GOOD	15'	DO NOT DISTURB	N		SNOW FENCING	L002
128	#####	Quercus rubrum	Red Oak	12"	FAIR	18'	DO NOT DISTURB	N		SNOW FENCING	L002
129	#####	Quercus alba	White Oak	8"	GOOD	12'	DO NOT DISTURB	N		SNOW FENCING	L002
130	#####	Quercus alba	White Oak	10"	GOOD	15'	DO NOT DISTURB	N		SNOW FENCING	L002
131	#####	Ulmus americana	American Elm	14"	FAIR	21'	DO NOT DISTURB	N		SNOW FENCING	L002
132	#####	Acer rubrum	Red Maple	8"	FAIR	12'	DO NOT DISTURB	N		SNOW FENCING	L002
Removed Trees											
100	#####	Acer rubrum	Red Maple	8"	POOR	12'	TO BE REMOVED	Y	Less than fair condition and path interference		L002
101	#####	Acer rubrum	Red Maple	6"	DEAD	9'	TO BE REMOVED	N	Dead Tree and path interference		L002
105	#####	Quercus alba	White Oak	6"	FAIR	9'	TO BE REMOVED	Y	Path interference		L002
110	#####	Quercus alba	White Oak	8"	POOR	12'	TO BE REMOVED	Y	Less than fair condition and path interference		L002
112	#####	Acer rubrum	Red Maple	6"	GOOD	9'	TO BE REMOVED	Y	Path interference		L002
113	#####	Acer rubrum	Red Maple	8"	GOOD	12'	TO BE REMOVED	Y	Less than fair condition and path interference		L002
117	#####	Ailanthus altissima	Tree of Heaven	10"	GOOD	15'	TO BE REMOVED	N	Invasive in natural area, path interference		L002
			ITEM 1 - TOTAL REMOVED INCHES:	52"							
			ITEM 2 - TOTAL INCHES TO BE MITIGATED	46"							

TABLE 2 - PROPOSED TREE DATA TABLE							
KEY	QTY	SIZE	BOTANICAL NAME	COMMON NAME	STOCK	TOTAL INCHES	SHEET NUMBER
TREES							
AC SA CO	5	3" CALIPER	ACER SACCHARUM 'COMMEMORATION'	COMMEMORATION SUGAR MAPLE	B&B	15"	L003
GY DI ES	5	3" CALIPER	GYMNOCLADUS DIOICUS 'ESPRESSO'	ESPRESSO KENTUCKY COFFEETREE	B&B	15"	L003
QU BI XX	5	2" CALIPER	QUERCUS BICOLOR	SWAMP WHITE OAK	B&B	10"	L003
TOTAL:	15			ITEM 2 - TOTAL INCHES TO BE MITIGATED:		46"	
				ITEM 3 - TOTAL INCHES PROVIDED:		40"	
				TREE FUND PAYMENT (ITEM 2 - ITEM 3) * \$260:		\$1560	
				INSPECTION FEES:			

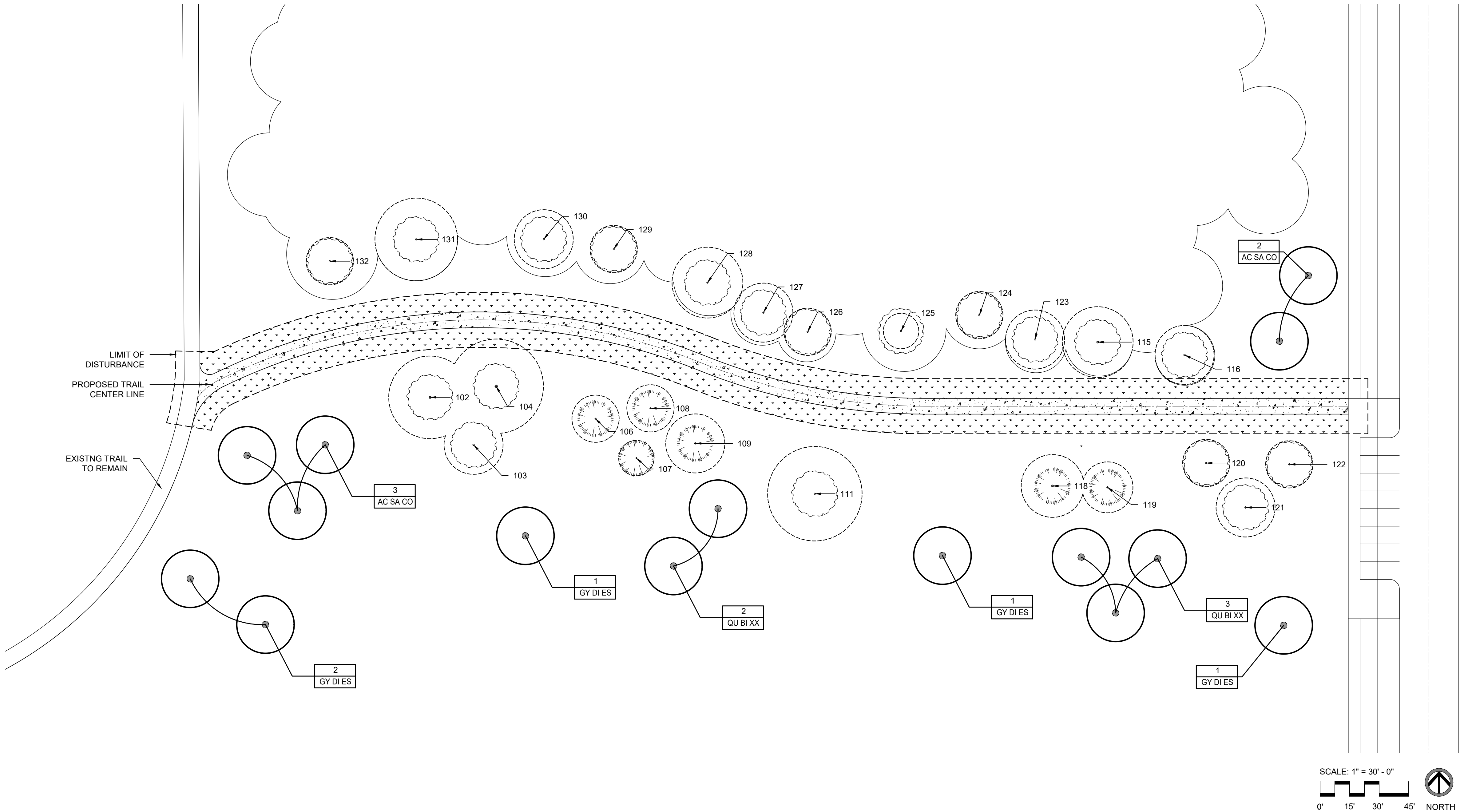
TABLE 3 - STANDARD PAY ITEMS					
ITEM NUMBER	DESCRIPTION			UNIT	SHEET NUMBER
201.03	Clearing & Grubbing			SF	L002
655	Tree Protection Fencing			LF	L002
209.01	Linear Grading			LF	L002
655.05	Tree Removal			LF	L002
661	Tree Planting			QTY.	L003



TREE PROTECTION AND REMOVAL LEGEND

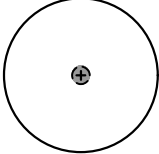
- TREE REMOVAL, ITEM 201
- TREE PROTECTION FENCING, SEE STANDARD DRAWING
- CRITICAL ROOT ZONE
- EXISTING DECIDUOUS TREE
- EXISTING CONIFEROUS TREE
- TREE ID NUMBER
- CLEARING AND GRUBBING

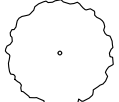
SHEET NUMBER L002	SHEET TITLE DEMOLITION PLAN	PROJECT ADDRESS XXXXX XXXXXX	PROJECT OWNER COLUMBUS RECREATION AND PARKS DEPARTMENT 1111 East Broad Street Columbus, OH 43205	PUBLIC TREE PLAN #




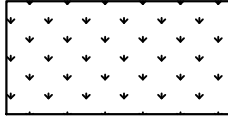
PLANTING LEGEND

----- CRITICAL ROOT ZONE

 PROPOSED TREE, SEE STANDARD DRAWING

 EXISTING DECIDUOUS TREE

 EXISTING CONIFEROUS TREE

 SEEDED LAWN AREA

SHEET NUMBER L003	SHEET TITLE TREE PLAN	PROJECT ADDRESS XXXXX XXXXXX	PROJECT OWNER COLUMBUS RECREATION AND PARKS DEPARTMENT 1111 East Broad Street Columbus, OH 43205	PUBLIC TREE PLAN #